



**SPRING/SUMMER 2015 APPAREL & GIFTS
DEALER CATALOGUE**

MEN'S LEATHERWEAR



MAGNUM JACKET AVAILABLE FOR DELIVERY NOW CORE

Bold and modern, the Magnum Jacket features a dynamic back graphic and generous V-Twin fit.

SHELL: Black 1.2-1.4mm 3M® Monaco leather; 97% leather, 2% nylon, 1% spandex
LINING: Removable long sleeve hoodie 100% polyester; D liner 90% cotton, 10% polyester.
ADDITIONAL FEATURES: Front and rear hidden air vents, CE approved shoulder and elbow protectors and action back. This jacket also features powerstretch side panels and a large Victory® logo on back.
SAFETY: 3M® night reflective and large 3M® night reflective Victory® logo on back.
FIT: V-Twin Fit

PART #: 2863729
SIZES: S-3XL

RRP \$595



W/P CANYON JACKET AVAILABLE FOR DELIVERY NOW CORE

The right gear for all-weather riding, safety and longterm durability. This leather jacket has an internal waterproof and breathable membrane to keep the rider dry. The leather features a TFL cool system, which reflects the sun's rays and keeps the rider cooler.

SHELL: 100% waterproof leather
LINING: 100% nylon; D liner 78% polyester, 18% nylon, 4% spandex, removable liner.
ADDITIONAL FEATURES: CE approved shoulder and elbow protectors, 3M® night reflective panels & piping, action back and powerstretch side panels.
FIT: V-Twin Fit

PART #: 2863613
SIZES: S-5XL

RRP \$595



BORDERLAND VEST AVAILABLE FOR DELIVERY NOW CORE

Represent the Victory® brand with this stylish leather vest now available in the V-Twin fit.

SHELL: 100% Black premium leather, 1.0-1.2mm
LINING: 100% nylon
ADDITIONAL FEATURES: Front snap closure and large back branding.

PART #: 2863730
SIZES: S-5XL

RRP \$160



LEATHER MESH HYBRID JACKET

AVAILABLE FOR DELIVERY NOW SEASONAL

The Leather Mesh Hybrid Jacket can be worn with the liner for three season riding or without for the hottest days on the road.

SHELL: Black Monaco 1.2-1.4mm leather with mesh polyester panels: 42% leather, 48% polyester, 8% nylon, 2% spandex.
LINING: 100% polyester mesh. D Liner: 80% polyester, 16% nylon, 4% spandex.
ADDITIONAL FEATURES: CE protectors in shoulder and elbows, stretch Cordura® underarm panels and action back. 3M® reflective piping.
FIT: V-Twin Fit

PART #: 2864330
 SIZES: S-5XL

RRP \$295



PART NUMBER SIZE GUIDE*

XS	S	M	L	XL	2XL	3XL	4XL	5XL	IW	2W	3W
01	02	03	06	09	12	14	15	16	17	18	19

*BASED ON THE SIZE YOU ARE ORDERING, ADD THE ABOVE NUMBER TO THE END OF THE ITEM'S PART NUMBER.
 **FOR MEN'S TOUR PANTS, ADD THE SIZE TO THE END OF THE PART NUMBER. EX. SIZE 30 PANTS WOULD BE 286321230.



BOMBER JACKET

AVAILABLE FOR DELIVERY NOW CORE

This casual jacket is great for on or off the road. This heavily branded jacket tells the Victory® story using patches and embroidery on the front, back and both sleeves.

SHELL: Black water resistant 100% nylon.
LINING: 100% polyester mesh lining
ADDITIONAL FEATURES: Adjustable cuffs, partially elasticized waistband and action back.
FIT: V-Twin Fit

PART #: 2864331
 SIZES: S-5XL

RRP \$195

TOUR JACKET

AVAILABLE FOR DELIVERY NOW CORE

Coast-to-coast comfort. This waterproof/breathable and windproof jacket has vents for when it's hot and a liner, storm collar and storm guard for when it's cold.

SHELL: Textile abrasion resistant nylon that is waterproof, breathable and windproof, 70% polyester, 30% nylon.
LINING: Removable softshell liner can be worn separate: 100%polyester, D-liner 100%polyester.
ADDITIONAL FEATURES: Hidden air vent panels, removable storm collar and the perfect stretch for comfort. This jacket also features a storm guard around waist, CE approved shoulder and elbow protectors and our multi-pocket design. Pocket only for back protectors, waist connection zipper.
SAFETY: Reflective panels & piping.
FIT: V-Twin Fit

PART #: 2863207
 SIZES: S-3XL

RRP \$395 Last season, limited stock available.



TOUR PANTS

AVAILABLE FOR DELIVERY NOW CORE

Jeans don't cut it riding cross country. Protect your legs with these waterproof/breathable and windproof pants. Match them up with your Tour Jacket (sold separately) to keep your legs warm on long rides.

SHELL: Waterproof, breathable and windproof: 70% polyester, 30% nylon
LINING: 100% polyester. Textile abrasion resistant nylon pants
ADDITIONAL FEATURES: Hidden air vents panels and stretch panel for comfort. CE approved knee protectors with placement adjustment, waist connection zipper to connect to jacket and long knee to ankle zippers.
SAFETY: Reflective panels & piping.

PART #: 2863212
 SIZES: 30-44

RRP \$195 Last season, limited stock available.



WOMEN'S LEATHERWEAR



VERSA JACKET

AVAILABLE FOR DELIVERY NOW CORE

Vintage style with modern fit, this jacket is designed for multi-season riding with a zip-in and out liner.

SHELL: Heavy nappa leather: 96% leather, 3% nylon, 1% spandex
LINING: 100% polyester; D liner, 80% polyester, 16% nylon, 4% spandex
ADDITIONAL FEATURES: CE approved shoulder and elbow protectors, hidden air vents and action back.
FIT: V-Twin Fit

PART #: 2863734
SIZES: XS-3XL

RRP \$595



BORDERLAND VEST

AVAILABLE FOR DELIVERY NOW CORE

Classic leather vest with an updated V-Twin fit and added style.

SHELL: 100% black premium leather: 1.0-1.2mm with front zip closure and large back branding
LINING: 100% nylon
FIT: V-Twin Fit

PART #: 2863736
SIZES: XS-3XL

RRP \$160



GLOVES



TOUR GLOVE

AVAILABLE FOR DELIVERY NOW CORE

Never accept cold hands. With these waterproof and windproof gloves, you can be sure your hands will be warm and protected—no matter how far you go.

SHELL: Leather and stretch nylon fabric construction; double layer palm with hidden Teramid®. Teramid® is super tenacious reinforced with Dupont Kevlar®.
LINING: Fixed moisture-wicking microfleece lining
ADDITIONAL FEATURES: Leather-covered hard molded knuckle; visor wipe; elasticated wrist with large Velcro® cuff closure.
SAFETY: 3M® reflective panels

MEN'S
PART #: 2863221 **SIZES:** S-2XL

RRP \$120



BRAND GLOVE

AVAILABLE FOR DELIVERY NOW CORE

Grab a fist full of Victory®. These lightweight gloves give you a snug fit with power stretch nylon and durable leather.

SHELL: Leather and stretch nylon construction; double leather palm panels.
LINING: Moisture-wicking microfleece lining
ADDITIONAL FEATURES: Elasticated cuff with Velcro® closure; hard knuckle protection.

MEN'S
PART #: 2863224 **SIZES:** S-2XL

RRP \$85



ATTITUDE CRUISER

AVAILABLE FOR DELIVERY NOW CORE

Get a grip. These high-performance gloves give you the hold you want and the protection you need.

SHELL: Leather and stretch nylon fabric construction; double layer palm with hidden Teramid®. Teramid® is super tenacious reinforced with Dupont Kevlar®.
LINING: Moisture-wicking microfleece lining
ADDITIONAL FEATURES: Elastic cuff designed with an adjustment panel; padded fingers and hard knuckle protection.
SAFETY: 3M® reflective panel on top of wrist

PART #: 2863226 **SIZES:** S-2XL

RRP \$85

CLASSIC GLOVE

AVAILABLE FOR DELIVERY NOW

CORE

The name says it all. Black leather with protective Kevlar® and ventilated finger panels make this glove a perfect fit.

SHELL: Leather and stretch nylon fabric construction; double layer palm with hidden Teramid®. Teramid® is super tenacious reinforced with Dupont Kevlar®
ADDITIONAL FEATURES: Elasticated wrist with Velcro® adjust; perforated inner finger panels.

MEN'S

PART #: 2863227 SIZES: S-2XL

RRP \$120



MEDINA MESH GLOVE

AVAILABLE FOR DELIVERY NOW

CORE

Keep your hands cool. Durable leather and Knuckle protection keep your hands safe while the mesh lets air flow in.

SHELL: Poly mesh and nylon construction; double-layer leather palm
ADDITIONAL FEATURES: Elasticated cuff with Velcro® closure; gel insert for palm padding; ventilated leather-covered molded hard Knuckles.

MEN'S

PART #: 2863229 SIZES: S-2XL

RRP \$60



FINGERLESS GLOVE

AVAILABLE FOR DELIVERY NOW

CORE

These gloves feature double-layer leather palms to keep your grip while your exposed fingers stay cool.

SHELL: Black punched leather for ventilation; double leather palm
ADDITIONAL FEATURES: Velcro® wrist closure; finger loops for easy removal.

MEN'S

PART #: 2863231 SIZES: S-2XL

RRP \$40



HEATED GLOVE

AVAILABLE FOR DELIVERY NOW

CORE

Ride in comfort when the temperature drops. This glove connects directly to the motorcycle battery or to the motorcycle auxiliary power socket with the optional extra aux power connector. The heat element is located on the top of the hand and fingers to deliver heat to the areas of the hand that need it. Fully waterproof, windproof and breathable.

SHELL: 85% leather, 12% nylon, 3% polyurethane

LINING: 100% polyester heated lining

ADDITIONAL FEATURES: Velcro® wrist adjustment; thumb visor wipe; silicon palm grip.

SAFETY: 3M® reflective piping; hard Knuckle protection

MEN'S

PART #: 2863617 SIZES: S-2XL

RRP \$160

LEATHER GRAPHIC GLOVE

AVAILABLE FOR DELIVERY NOW

CORE

Ride with confidence, control and comfort.

SHELL: Perforated leather for ventilation; double leather palm

ADDITIONAL FEATURES: Velcro® wrist adjustment

SAFETY: 3M® reflective panels; hard Knuckle protection; padded Knuckle.

MEN'S

PART #: 2864333 SIZES: S-2XL

RRP \$80



MEN'S STREETWEAR



BRAND SS SHIRT

AVAILABLE FOR DELIVERY NOW CORE

A pit shirt you'll need to add to your wardrobe to show off your Victory® style.

FABRIC: 65% polyester, 35% cotton
 GRAPHICS: Embroidery branding and patch

PART #: 2863775
 SIZES: S-3XL

RRP \$70



BRAND POLO SHIRT

AVAILABLE FOR DELIVERY NOW CORE

A polo done the Victory® way, modern and bold.

FABRIC: 57.5% cotton, 38.5% polyester, 4% elastane
 GRAPHICS: Single pique with embroidered logo and patch
 ADDITIONAL FEATURES: Partial button front, collar

PART #: 2863776
 SIZES: S-3XL

RRP \$50



BRAND ZIP THRU

AVAILABLE FOR DELIVERY NOW CORE

This comfy zip up will be one of your favorites on and off your Victory® bike.

FABRIC: 70% cotton, 30% polyester fleece-back fabric
 GRAPHICS: Victory® logos to chest, back and arm
 ADDITIONAL FEATURES: Two handwarmer pockets, zip front, knit cuffs and waistband

PART #: 2863777
 SIZES: S-3XL

RRP \$90



ATTITUDE RACE NECK ZIP THRU

NEW SS15 CORE

The perfect black zip up to wear to any event.

FABRIC: 380g 100% Cotton fine french rib
 ADDITIONAL FEATURES: Embroidery and contrast piping

PART #: 2864390
 SIZES: S-3XL

RRP \$90

**LOGO COLOR BADGE T-SHIRT
BLACK**

AVAILABLE FOR DELIVERY NOW CORE

This is power branding. The great new Victory® logo gives visual power to this comfortable black t-shirt.

FABRIC: 100% cotton single jersey; light silicone wash

GRAPHICS: Discharge print of the Victory® logo on the front.

PART #: 2863237

SIZES: S-5XL

RRP \$50



LOGO T-SHIRT BLACK

AVAILABLE FOR DELIVERY NOW CORE

Basic – plus. A basic black all-cotton t-shirt is the ultimate in comfort and style. Add the new Victory® logo and you redline the style meter.

FABRIC: 100% cotton single jersey; light silicone wash

GRAPHICS: Discharge print of the Victory® logo on the front.

PART #: 2863240

SIZES: S-5XL

RRP \$50

**LOGO COLOR BADGE
T-SHIRT GREY**

AVAILABLE FOR DELIVERY NOW CORE

Big and bold. The new Victory® logo on the front of this comfortable all-cotton t-shirt makes it clear that you ride the best.

FABRIC: 100% cotton single jersey, light silicone wash

GRAPHICS: Discharge print of the Victory® logo on the front.

PART #: 2863238

SIZES: S-5XL

RRP \$50



LOGO T-SHIRT GREY MARL

AVAILABLE FOR DELIVERY NOW CORE

Versatility plus. This comfortable all-cotton grey t-shirt looks great with everything, especially since it has the Victory® logo on the front.

FABRIC: 100% cotton single jersey; light silicone wash

GRAPHICS: Discharge print of the Victory® logo on the front.

PART #: 2863242

SIZES: S-5XL

RRP \$50

**LOGO COLOR BADGE
T-SHIRT WHITE**

AVAILABLE FOR DELIVERY NOW CORE

Cool and colorful. This white t-shirt is cool on a sunny summer ride and the new Victory® logo on the front proclaims that you ride a winner.

FABRIC: 100% cotton single jersey; light silicone wash

GRAPHICS: Victory® logo in a water-based ink print on the front.

PART #: 2863239

SIZES: S-5XL

RRP \$50



**ATTITUDE FLAME LOGO
T-SHIRT**

AVAILABLE FOR DELIVERY NOW SEASONAL

Step up your attitude with this jet-black t-shirt featuring the Victory® logo adorned with flames.

FABRIC: 100% cotton slub, 180g slub jersey with discharge print and heavy enzyme wash

PART #: 2863779

SIZES: S-3XL

RRP \$50

BADGE ATTITUDE HOODIE

AVAILABLE FOR DELIVERY NOW SEASONAL

A heavy cotton hoodie with Victory® style.

FABRIC: 100% cotton slub jersey, French terry

back, 380 gsm; enzyme wash

GRAPHICS: Skull patch on sleeve; embroidery on front and back

PART #: 2863639

SIZES: S-3XL

RRP \$90



LS ATTITUDE 2 IN 1 T-SHIRT

AVAILABLE FOR DELIVERY NOW SEASONAL

Rock this 2-in-1 t-shirt for convenience and comfort.

FABRIC: 100% cotton; 200g single jersey

GRAPHICS: Discharge print with heavy enzyme wash.

PART #: 2863783

SIZES: S-3XL

RRP \$60



ACE RAGLAN TEE

NEW SS15 SEASONAL

This two-tone tee features classic Victory® ace graphics for a retro look.

FABRIC: 180g 100% Cotton single jersey

GRAPHICS: 180g cotton single jersey with discharge print and enzyme wash.

PART #: 2864392

SIZES: S-3XL

RRP \$50



POKER RUN T-SHIRT

AVAILABLE FOR DELIVERY NOW SEASONAL

A vintage look with today's style.

FABRIC: 100% cotton single jersey; enzyme

wash finish

GRAPHICS: Discharge print on front and back

PART #: 2863646

SIZES: S-3XL

Last season, limited stock available.

RRP \$50

ENGINE LS T-SHIRT

AVAILABLE FOR DELIVERY NOW SEASONAL

Red, white and blue never go out of style.

FABRIC: 100% cotton single jersey; 200 gsm;

silicone wash

GRAPHICS: Waterbased print of Victory® logo on front, sleeves, and engine on back.

PART #: 2864343

SIZES: S-3XL

RRP \$60



MONTAGE T-SHIRT

AVAILABLE FOR DELIVERY NOW SEASONAL

This grunge inspired t-shirt shows V-Twin pride with original art.

FABRIC: 100% cotton single jersey; 180 gsm;

silicone wash

GRAPHICS: Waterbased print on front; Victory® logo on back neck

PART #: 2864344

SIZES: S-3XL

Last season, limited stock available.

RRP \$50



SHIELD T-SHIRT

AVAILABLE FOR DELIVERY NOW SEASONAL

A contemporary take on a retro design showcasing stars and stripes to show your American pride.

FABRIC: 100% cotton single jersey; 180 gsm; silicon wash

GRAPHICS: Waterbased print of Victory® Script logo and pinup girl on front; Victory® logo on back; V-Twin Engine text on sleeve

PART #: 2864345

SIZES: S-3XL

Last season, limited stock available.

RRP \$50



ATTITUDE PLAID SHIRT

AVAILABLE FOR DELIVERY NOW CORE

This plaid shirt looks and feels great with subtle branding and everyday comfort.

FABRIC: 66% cotton, 33% rayon, 3% spandex, carbonized finish with soft hand feel.

GRAPHICS: Woven chest labels.

PART #: 2863571

SIZES: S-3XL

Last season, limited stock available.

RRP \$60



SHERPA SHIRT

AVAILABLE FOR DELIVERY NOW CORE

Comfortable and stylish, this plaid has extra lining to keep you warm on any cold day.

FABRIC: 78% polyester, 20% acrylic, 1% wool, 1% other shell, 100% polyester lining.

GRAPHICS: Brushed plaid with flock print Victory® logo and embroidered patch. Garment wash.

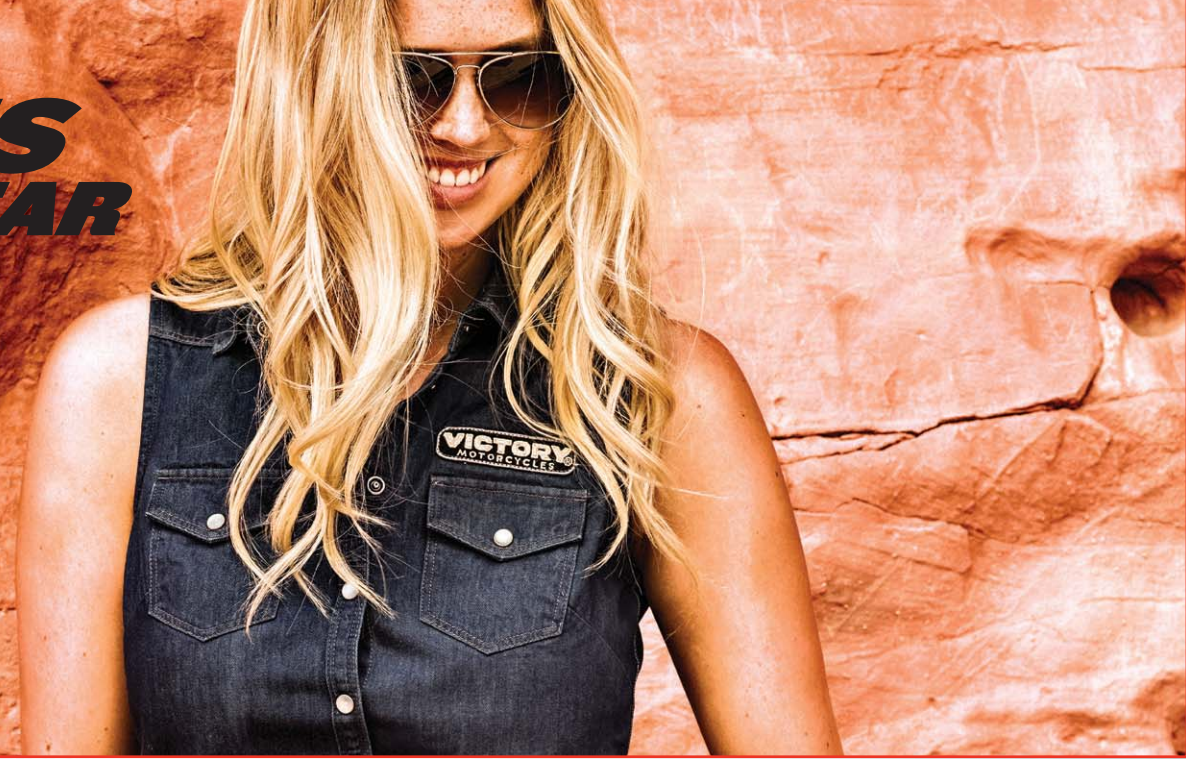
PART #: 2863789

SIZES: S-3XL

RRP \$95



WOMEN'S STREETWEAR



FREEDOM V-NECK T-SHIRT

AVAILABLE FOR DELIVERY NOW SEASONAL

Freedom says it all with this comfortable t-shirt.

FABRIC: 100% cotton slub jersey.
GRAPHICS: Discharge print with rhinestones on front; discharge Victory® logo on back.

PART #: 2864347
SIZES: S-3XL

Last season, limited stock available.

RRP \$50



ECRU LOGO T-SHIRT

AVAILABLE FOR DELIVERY NOW SEASONAL

Lighten up in this traditional t-shirt with modern logo and fashionable high-low bottom cut.

FABRIC: 100% cotton single jersey; softener wash.
GRAPHICS: Water-based print of Victory® logo on front and back.

PART #: 2864350
SIZES: S-3XL

Last season, limited stock available.

RRP \$50



CK CHAMBRAY SHIRT

NEW SS15 SEASONAL

You'll need this classic button-up for nights out on the town. It features distressed Victory® script graphics and some feminine lace to enhance the style.

FABRIC: 100% cotton
GRAPHICS: 100% cotton chambray 5oz with discharge print and enzyme wash with softener. Lace detail at shoulder and back yoke.

PART #: 2864397
SIZES: XS-3XL

RRP \$95

LOGO T-SHIRT BLACK

AVAILABLE FOR DELIVERY NOW SEASONAL

This comfortable, goes-with-everything black t-shirt makes it clear you ride the very best.

FABRIC: 100% cotton single jersey; light silicone wash
GRAPHICS: Victory® logo printed on the front.

PART #: 2863254
SIZES: S-3XL

Last season, limited stock available.

RRP \$50



V-NECK LOGO T-SHIRT BLACK

AVAILABLE FOR DELIVERY NOW SEASONAL

A classic essential for your Victory® wardrobe.

FABRIC: 100% cotton slub jersey, yard with softener wash.
GRAPHICS: Discharge print to chest and back, dipped hem at back.

PART #: 2864353
SIZES: S-3XL

Last season, limited stock available.

RRP \$50



**SCRIPT LOGO TEE BLACK
SCOOP NECK TEE**

AVAILABLE FOR DELIVERY NOW CORE

This scoop neck is sleek, simple, and goes with everything.

FABRIC: 100% cotton
GRAPHICS: 140g single jersey with flock and pigment print, garment wash with softener.

PART #: 2863794

SIZES: XS-3XL

RRP \$50



**SCRIPT LOGO RED
CREW NECK TEE**

AVAILABLE FOR DELIVERY NOW CORE

Elegant styling and the classic script logo—perfect for any day.

FABRIC: 100% cotton
GRAPHICS: 140g single jersey with flock and pigment print, garment wash with softener.

PART #: 2863795

SIZES: XS-3XL

RRP \$50



**DIAMANTE CREW NECK
T-SHIRT RED**

AVAILABLE FOR DELIVERY NOW CORE

Stand out from the crowd with this rhinestone embroidered Victory® t-shirt.

FABRIC: 95% Cotton, 5% elastane; 180g jersey with elastane; garment wash with softener.
GRAPHICS: Discharge print with rhinestones.

PART #: 2863796

SIZES: XS-3XL

RRP \$50



DIAMANTE TANK BLACK

AVAILABLE FOR DELIVERY NOW CORE

Stay cool when the weather heats up in this blinged-out cotton tank.

FABRIC: 180g jersey with elastane: 95% cotton, 5% elastane; garment wash with softener
GRAPHICS: Discharge print with rhinestones.

PART #: 2863803
SIZES: XS-3XL

RRP \$40



SCRIPT LOGO HOODIE

AVAILABLE FOR DELIVERY NOW CORE

A classic look for your casual wardrobe.

FABRIC: 60% cotton, 40% polyester; 340g
GRAPHICS: Brushback with sueding on face with embroidered applique and laid on stripe with enzyme wash.

PART #: 2863806
SIZES: XS-3XL

RRP \$90



LOGO ZIP THRU

AVAILABLE FOR DELIVERY NOW CORE

Matches your leather jacket perfectly to showcase your pride off the bike.

FABRIC: 60% cotton, 40% polyester; 340g
GRAPHICS: Brushback sueding on face with embroidered applique and laid on stripe, enzyme wash.

PART #: 2863807
SIZES: XS-3XL

RRP \$90



SEQUIN LOGO TEE GRAY

NEW SS15 SEASONAL

Add some more sparkle to your wardrobe with this Victory® script sequin tee.

FABRIC: 100% Cotton single jersey.
GRAPHICS: Waterbased print and softener wash, Sequin logo on chest.

PART #: 2864399
SIZES: XS-3XL

RRP \$50

SEQUIN LOGO TEE RED

NEW SS15 SEASONAL

PART #: 2864400
SIZES: XS-3XL

RRP \$50

V-TWIN ENGINE SCOOP NECK T-SHIRT

AVAILABLE FOR DELIVERY NOW SEASONAL

Rock your 106 pride with this engine t-shirt.

FABRIC: 100% cotton; 140g single jersey
GRAPHICS: Discharge print and rhinestones, snow wash.

PART #: 2863797
SIZES: XS-3XL

RRP \$50





FREEDOM LACE TEE

AVAILABLE FOR DELIVERY NOW SEASONAL

Showcase the Freedom 106 engine pride on this classy lace t-shirt.

FABRIC: 60% tencel, 40% modal, 120gsm nylon sleeves

GRAPHICS: 160g single jersey with pigment print, rhinestones and lace, garment wash.

PART #: 2863798

SIZES: XS-3XL

RRP \$50

HEADGEAR



CHILDREN

VICTORY® LS BODYSUIT 2 PACK

AVAILABLE FOR DELIVERY NOW

Give your little one a head start in the world with these bold Victory® onesies.

FABRIC: 100% Cotton

PART #: 286380902 3-6M/SMALL
 298380903 6-12M/MEDIUM
 286380906 12-18M/LARGE

RRP \$25





VINTAGE TRUCKER HAT

NEW SS15 CORE

This vintage wash hat is unique and gives a new spin to the classic trucker hat.

GRAPHICS: Logo embroidery on the front
ADDITIONAL FEATURES: Embroidered front logo; plastic adjuster at rear.

PART #: 2863838
SIZES: ONE SIZE

RRP \$25



MARL HAT

AVAILABLE FOR DELIVERY NOW CORE

Sport your love for freedom on your head with this trendy men's cap.

GRAPHICS: Logo embroidery on the front
ADDITIONAL FEATURES: Metal closure buckle

PART #: 2863742
SIZES: ONE SIZE

RRP \$25

FLEX FINE RIB HAT

NEW SS15 CORE

Classic and bold with two-tone grey and black, your love for Victory® won't be hidden.

GRAPHICS: Logo embroidery on the front
ADDITIONAL FEATURES: Embroidered front logo reflective patch; elasticated headband.

PART #: 2863839
SIZES: ONE SIZE

RRP \$25



MELTON SCRIPT HAT

AVAILABLE FOR DELIVERY NOW CORE

Old school is new school with this Victory® trucker hat.

GRAPHICS: Script logo
ADDITIONAL FEATURES: Adjustable plastic strap at rear.

PART #: 2863743
SIZES: ONE SIZE

RRP \$25



VICTORY® VISOR

NEW SS15 CORE

Our first visor comes full with attitude and flames.

ADDITIONAL FEATURES: 100% cotton; embroidered front logo; adjustable Velcro® at rear.

PART #: 2863840
SIZES: ONE SIZE

RRP \$25



VICTORY® BADGE LOGO HAT

AVAILABLE FOR DELIVERY NOW CORE

This comfortable hat prominently features the Victory® badge logo across the front and provides a comfortable fit with its cotton, spandex construction.

GRAPHICS: Embroidered Victory® logo on the front
ADDITIONAL FEATURES: Red fabric on the underside of the bill.

PART #: 2863263
SIZES: ONE SIZE

RRP \$25

MESH HAT

AVAILABLE FOR DELIVERY NOW CORE

Stay comfortable and cool in this Victory® branded mesh hat.

GRAPHICS: Logo embroidery on the front
ADDITIONAL FEATURES: Inner elastic headband

PART #: 2863741
SIZES: ONE SIZE

RRP \$25



ATTITUDE HAT

AVAILABLE FOR DELIVERY NOW CORE

This black hat is a great way to show Victory® pride with branding on the front and back.

GRAPHICS: Embroidered Victory® logo
ADDITIONAL FEATURES: Inner elastic headband; adjustable Velcro® at rear.

PART #: 2863564
SIZES: ONE SIZE

RRP \$25





VICTORY® ARMY LOGO HAT

AVAILABLE FOR DELIVERY NOW CORE

This comfortable hat features a military-inspired logo and special features for a great look.

GRAPHICS: Victory® logo on the front
ADDITIONAL FEATURES: Metal eyelets around the vent holes; metal closure buckle on the strap at the rear

PART #: 2863264
SIZES: ONE SIZE

RRP \$25

WOMEN'S MARL TRUCKER HAT

AVAILABLE FOR DELIVERY NOW CORE

Pink and proud with the classic Victory® Script logo.

GRAPHICS: Victory® Script logo patch
ADDITIONAL FEATURES: Adjustable plastic strap at rear.

PART #: 2863261
SIZES: ONE SIZE

RRP \$25



VICTORY® FLAT SKIP LOGO HAT

AVAILABLE FOR DELIVERY NOW CORE

Classic styling with creative logo treatments make this comfortable flat hat a sure winner.

GRAPHICS: Embroidered Victory® logo
ADDITIONAL FEATURES: Victory® logo printed inside the crown and on the underside of the bill.

PART #: 2863267
SIZES: ONE SIZE

RRP \$25



VICTORY® WOMEN'S SCRIPT HAT

AVAILABLE FOR DELIVERY NOW CORE

This all-cotton hat features an embroidered Victory® Script logo and adjustable rear strap for an ideal fit.

GRAPHICS: Victory® Script logo
ADDITIONAL FEATURES: Hook & loop back strap for adjustable fit.

PART #: 2863271
SIZES: ONE SIZE

RRP \$25

ENGINE HAT

AVAILABLE FOR DELIVERY NOW CORE

Rich details and a serious look.

GRAPHICS: Printed V-Twin engine; embroidered Victory® logo and 106; arrow print around back.
ADDITIONAL FEATURES: Inner elastic headband.

PART #: 2864334
SIZES: ONE SIZE

RRP \$25

LOGO BEANIE

AVAILABLE FOR DELIVERY NOW CORE

This comfortable 100% cotton beanie features a Victory® callout all around, it's perfect to keep you warm when the temperature drops.

GRAPHICS: Victory® callout all around
ADDITIONAL FEATURES: 100% cotton fleece lining.

PART #: 2864337
SIZES: ONE SIZE

RRP \$25



V-TWIN POWER HAT

AVAILABLE FOR DELIVERY NOW CORE

This two-tone hat features skulls and flames to show your Victory® attitude.

GRAPHICS: Embroidered V-Twin Power and Victory® logo, printed skull and flames; V-Twin Power embroidered on back.
ADDITIONAL FEATURES: Adjustable metal closure buckle on rear strap.

PART #: 2864335
SIZES: ONE SIZE

RRP \$25



VICTORY® RIB KNIT BEANIE RED

AVAILABLE FOR DELIVERY NOW CORE

This comfortable 100% acrylic beanie features a stylish rib knit and a label with the Victory® logo.

GRAPHICS: Label with woven Victory® logo
ADDITIONAL FEATURES: Inner fleece headband for extra comfort.

PART #: 2863272
SIZES: ONE SIZE

RRP \$25



VICTORY® UNDER HELMET BALACLAVA
AVAILABLE FOR DELIVERY NOW

Extend your riding season with the added comfort of this 100% polyester balaclava. Its nose and mouth openings ensure easy, comfortable breathing and it has a printed Victory® V logo.

GRAPHICS: Victory® 'V' logo print
ADDITIONAL FEATURES: Nose hole mouth holes

PART #: 2863278
SIZES: ONE SIZE

RRP \$70

VICTORY® FACE MASK
AVAILABLE FOR DELIVERY NOW

Slip on this 100% polyester face mask when the weather turns cold to add a layer of protection and comfort. Its nose and mouth openings ensure easy, comfortable breathing and there's a printed Victory® V logo. One size fits all.

GRAPHICS: Victory® 'V' logo print
ADDITIONAL FEATURES: Nose hole mouth holes

PART #: 2863279
SIZES: ONE SIZE

RRP \$30



SKULL WRAP
AVAILABLE FOR DELIVERY NOW

An elastic fit that is just right for all riders.

GRAPHICS: Printed Victory® logo at front and back
ADDITIONAL FEATURES: Elastic band at back.

PART #: 2863567
SIZES: ONE SIZE

RRP \$20



NECK WARMER
AVAILABLE FOR DELIVERY NOW

This comfortable neck warmer is a great addition when temperatures dip. Printed Victory® logo at front and back.

GRAPHICS: Printed logo at front and back

PART #: 2863568
SIZES: ONE SIZE

RRP \$30

PERSONAL ACCESSORIES



VICTORY® BADGE LOGO BOTTLE OPENER
AVAILABLE FOR DELIVERY NOW

This heavy metal bottle opener features the Victory® badge logo.

PART #: 2863670

RRP \$14



VICTORY® RUBBER COASTER SET OF 6
AVAILABLE FOR DELIVERY NOW

A great gift for the Victory® owner who likes to entertain.

PART #: 2863671

RRP \$20



VICTORY® BADGE LOGO MUG SET OF 4 MUGS
AVAILABLE FOR DELIVERY NOW

This ceramic mug features the Victory® badge logo.

PART #: 2863602

RRP \$40



VICTORY® RUBBER BAR MAT
AVAILABLE FOR DELIVERY NOW

A nice touch for the home biker bar.

PART #: 2863600

RRP \$30



VICTORY® SCULPTED MUG SET OF 2 MUGS
AVAILABLE FOR DELIVERY NOW

Drink in style from this oversized mug.

PART #: 2863601

RRP \$29.95



VICTORY® BADGE LOGO GLASS SET OF 4 GLASSES
AVAILABLE FOR DELIVERY NOW

Everything tastes better in these Victory® glasses.

PART #: 2863603

RRP \$40



BELT - FASHION
AVAILABLE FOR DELIVERY NOW

This stylish and durable, 100% cow leather belt features a buckle from a Victory® leather saddle bag with the Victory® logo.

MATERIAL: 100% leather

PART #: 2863282
SIZES: S-XL
RRP \$60



BELT STRAP FOR BUCKLE BLACK
AVAILABLE FOR DELIVERY NOW

This stylish black 100% cow leather belt looks best when teamed with a Victory® Logo Buckle (sold separately).

MATERIAL: 100% leather

PART #: 2863283
SIZES: S-XL
RRP \$30



BUCKLE GLITTER
NEW SS15 AVAILABLE FOR DELIVERY OCTOBER

Add some bling to your belt with this glitter buckle

MATERIAL: 100% metal alloy

ADDITIONAL FEATURES: Victory® logo with silver glitter enamel infill.

PART #: 2863821
RRP \$25



BELT - MATTE BLACK
NEW SS15 AVAILABLE FOR DELIVERY OCTOBER

This sleek, matte black belt is the perfect accessory for any outfit.

MATERIAL: 100% leather

PART #: 2863880
SIZES: S-XL
RRP \$60



BUCKLE LOGO GRAIN
NEW SS15 AVAILABLE FOR DELIVERY OCTOBER

Strong and bold this buckle is made of 100% metal alloy.

MATERIAL: 100% metal alloy

ADDITIONAL FEATURES: Victory® logo with grain effect background.

PART #: 2863820
RRP \$25



BUCKLE LOGO
AVAILABLE FOR DELIVERY NOW

You can proudly show off the Victory® logo with this premium gun metal buckle with black enamel finish.

MATERIAL: 100% metal alloy

ADDITIONAL FEATURES: Victory® logo with black enamel infill.

PART #: 2863284
RRP \$45



BUCKLE - CRYSTAL
AVAILABLE FOR DELIVERY NOW

This eye-catching women's buckle features the Victory® logo in a combination of 100% metal alloy with logo detailing.

MATERIALS: 100% metal alloy

PART #: 2863285
RRP \$40



TRI-FOLD WALLET
NEW SS15 AVAILABLE FOR DELIVERY OCTOBER

High quality and extremely convenient with multiple card holding sections.

ADDITIONAL FEATURES: Embossed brand logo, branded lining, inner silver logo and red piping details.

MATERIALS: 100% leather

PART #: 2863867
RRP \$45



PASSPORT HOLDER
NEW SS15 AVAILABLE FOR DELIVERY OCTOBER

Keep your passport in this high quality 100% leather booklet embossed with the Victory® logo.

MATERIALS: 100% leather

PART #: 2863869
RRP \$45



BI-FOLD WALLET
NEW SS15 AVAILABLE FOR DELIVERY OCTOBER

High quality and extremely convenient, this new leather wallet you have to have.

ADDITIONAL FEATURES: Embossed brand logo, branded lining, inner silver logo, red piping details and multi compartments.

MATERIALS: 100% leather

PART #: 2863866
RRP \$45



CREDIT CARD HOLDER / CLIP WALLET
NEW SS15 AVAILABLE FOR DELIVERY OCTOBER

Made 100% of black leather with an embossed Victory® logo.

MATERIALS: 100% leather

PART #: 2863868
RRP \$40



KEY FOB LOGO

AVAILABLE FOR DELIVERY NOW

This leather-backed key fob features a metal Victory® logo, adding extra branding when used with your bike key.

PART #: 2863281

RRP \$15



KEY FOB GLOBE

AVAILABLE FOR DELIVERY NOW

This leather-backed key fob features a metal globe with an engraved Victory® logo.

PART #: 2863280

RRP \$15



VICTORY® BADGE LOGO RUBBER KEY FOB

AVAILABLE FOR DELIVERY NOW

This double sided rubber key fob features the Victory® logo with an engraved key ring.

PART #: 2863583

RRP \$13.95



VICTORY® BLOCK LOGO RUBBER KEY FOB

AVAILABLE FOR DELIVERY NOW

This rubber key fob features the Victory® block logo with an engraved key ring.

PART #: 2863584

RRP \$13.95



LOGO PATCH

AVAILABLE FOR DELIVERY NOW

This embroidered patch makes it easy to add the Victory® logo to your vest, jacket or shirt.

PART #: 2862404

RRP \$7



GLOBE PATCH

AVAILABLE FOR DELIVERY NOW

It's easy to add the Victory® globe logo to your vest, jacket or shirt by sewing on this woven patch.

PART #: 2863289

RRP \$7



LOGO PIN BADGE

AVAILABLE FOR DELIVERY NOW

Show your Victory® pride by adding this Victory® badge logo pin to your vest, cap or jacket. Premium quality 100% iron alloy.

PART #: 2863290

RRP \$9.95



OVAL LOGO PIN BADGE

AVAILABLE FOR DELIVERY NOW

This Victory® oval logo pin lets you show your Victory® pride on your vest, cap or jacket. Premium quality 100% iron alloy.

PART #: 2863292

RRP \$9.95



LOGO BADGE PATCH

AVAILABLE FOR DELIVERY NOW

This embroidered patch makes it easy to add the Victory® badge logo to your vest, jacket, or shirt.

PART #: 2863288

RRP \$7



GLOBE PIN BADGE

AVAILABLE FOR DELIVERY NOW

Add this Victory® globe logo pin to your vest, cap or jacket to show your Victory® pride. Premium quality 100% iron alloy.

PART #: 2863291

RRP \$9.95



VICTORY® LOGO V-PIN BADGE

AVAILABLE FOR DELIVERY NOW

Show your Victory® pride by adding this Victory® V logo pin to your vest, cap or jacket. Premium quality 100% iron alloy.

PART #: 2863293

RRP \$9.95



When you're enjoying your new Victory® Motorcycle, always wear a helmet, protective eyewear and clothing and insist that your passenger do the same. Ride within the limits of the law and your own abilities. Read and understand your owner's manual. Never ride under the influence of drugs or alcohol. Victory Motorcycles® strongly recommends that all riders take a Motorcycle Safety Foundation® Rider Course. For a course near you, call 1-800-446-9227. Protect riders' rights by joining the American Motorcyclist Association. For the name of your nearest Victory® dealership, call 1-800-POLARIS or visit our website at VictoryMotorcycles.com. All riders are professionals and on a closed course. To the best knowledge of Polaris Industries Inc., the specifications, descriptions, and illustrative material contained herein are accurate as of the date this catalog was approved for printing. Polaris Industries Inc. reserves the right, without prior notice, to discontinue at any time at its discretion any of the items herein or change specifications or designs without incurring any obligation to the customer. All items are subject to availability and prior sales by our dealers. Printed in U.S.A. Location Photography by Todd Williams (<http://www.toddwilliamsusa.com>)

Studio Photography by SAGA Marketing. Catalog design by Tattoo Projects. Printed in USA.

Unless noted, trademarks are the property of Polaris Industries Inc. EXO2™ The Heat Inside® is the registered trademark of EXO Technologies Ltd. 3M™ is a registered trademark of 3M™ Corporation. Cordura® is a registered trademark of Invista North America S.A. R.L. Snell® is a registered trademark of Snell Memorial Foundation, Inc. Kevlar® is a registered trademark of E.I. du Pont de Nemours & Company. Velcro® is a registered trademark of Velcro™ Industries B.V. Ltd Co. Netherlands. Qwick-Dry™ is a registered trademark of Innovative Fashion Group Corp.



Polaris Industries Australia
Freecall 1300 721 360
www.victorymotorcycles.com.au

Polaris Industries New Zealand
Freecall 0805 842 867
www.victorymotorcycles.co.nz

©2015 Polaris Industries Inc.