



THE VICTORY® COMBUSTION CONCEPT

INTRODUCING THE THIRD CONCEPT MOTORCYCLE THAT WRAPS AROUND THE NEWEST ENGINE IN THE VICTORY MOTORCYCLES® LINE-UP.

Zach Ness created "Combustion" as an answer to what an American Musclebike can be, with taut bodywork and graphics that emphasize the excitement Victory Motorcycles® is bringing to the American Motorcycle market.

The first and second bikes in this series included Roland Sands' Project 156 and Urs Erbacher's Ignition Concept that celebrate the evolution of the newest engine for Victory Motorcycles®.

The American automotive scene is filled with inspiration for this latest concept motorcycle. Legendary Muscle Cars that emphasized power and light weight to maximize street performance were the inspiration for Ness' build. The new engine promises stellar performance in the 1200cc musclebike class, and is part of the future for Victory Motorcycles®.



SPONTANEOUS COMBUSTION

Born into custom motorcycle royalty, Zach Ness is the third generation of custom builders. His grandfather, Arlen, and father, Cory, established a relationship with Victory Motorcycles® when Zach was only twelve, so the brand has been part of his entire adult life.

Surrounded every day by horsepower, style and innovation, Zach was the ideal builder to take on the challenge of creating the third concept around the new Victory Motorcycles' engine.

Ness worked with the Victory Motorcycles® industrial design team, led by Michael Song, to create this concept motorcycle.

"This platform is awesome – loads of power, and an insane engine sound," says Ness of the new engine. "The inspiration for the bike came fully from the throttle – I wanted to create a bike that was fast – light and ready to attack the next green light."



COMBUSTION CONCEPT HIGHLIGHTS

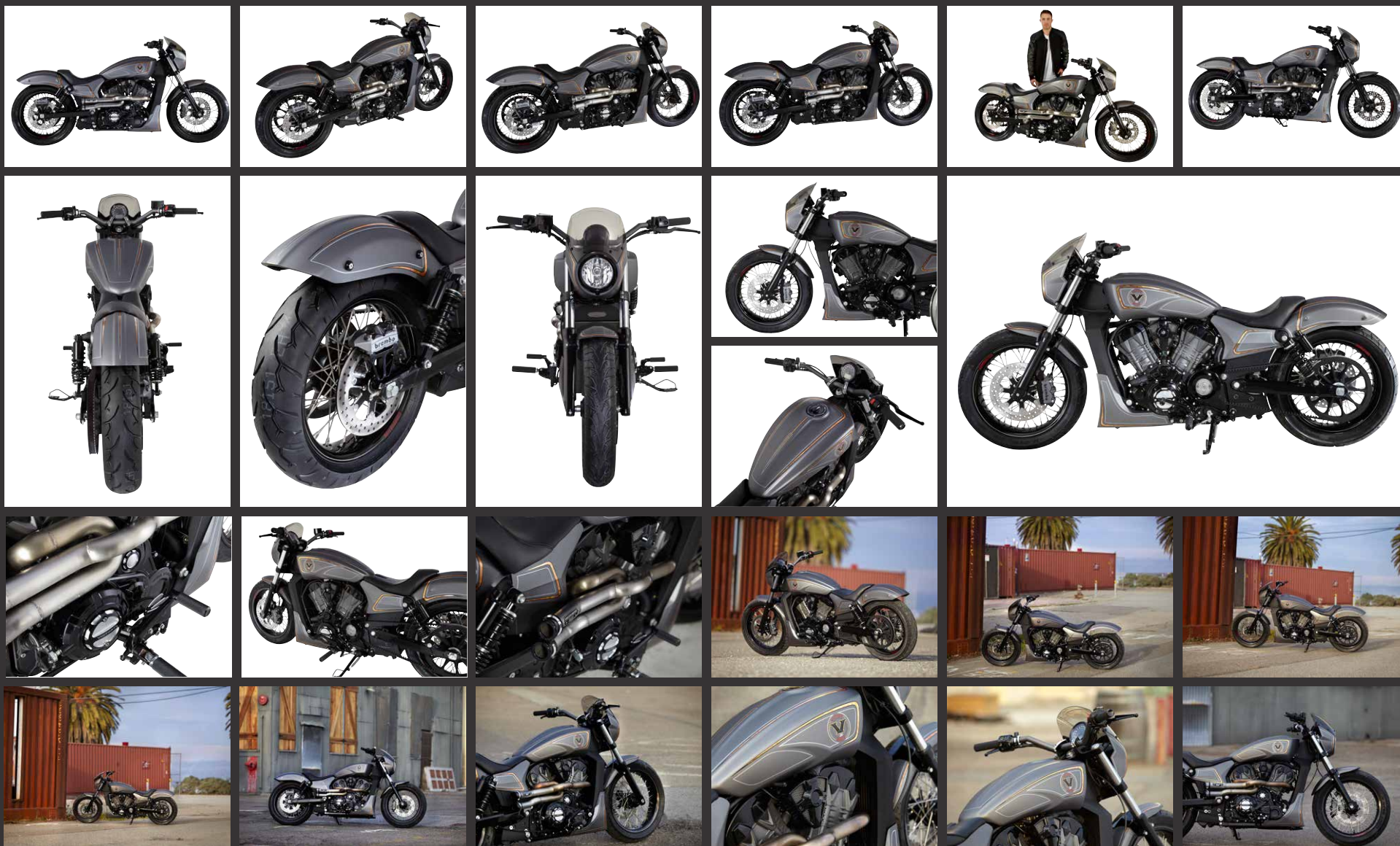
The design for Combustion features key elements that speak to performance styling and power. Key design features include a quarter fairing, aggressive semi-matte paint, sculpted side-covers, a trim fender and the characteristic Victory Motorcycles® raised spine that flows through the body.

Ness' custom background shows up in the wire wheels, intricate pin striping and clean details that include: Arlen Ness® Knurled Grips, Shift and Foot Pegs, "Torque Box" Air Cleaner, Custom Handlebars and Arlen Ness® by MagnaFlow® Exhaust – a one-off stainless steel design. Combustion also features beveled brake rotors, custom

painted Brembo® radial brake calipers and Goodridge® brake lines. Billet pieces include top riser clamps, engine and master cylinder covers. RideWright Wheels® are fitted to billet hubs and rims with stainless steel spokes. Paint is by Eric Reyes.

PRESS IMAGES

VICTORY® COMBUSTION CONCEPT



FOR ADDITIONAL HIGH AND LOW RESOLUTION DOWNLOADS, LOG ONTO WWW.VICTORYPRESSKIT.COM.

PRESS IMAGES

VICTORY® COMBUSTION CONCEPT



FOR ADDITIONAL HIGH AND LOW RESOLUTION DOWNLOADS, LOG ONTO WWW.VICTORYPRESSKIT.COM.



FOR MORE INFORMATION, HIGH AND LOW RESOLUTION IMAGES AND SPECIFICATIONS, PLEASE LOG ON TO
WWW.VICTORYPRESSKIT.COM OR CONTACT: ROBERT.PANDYA@POLARIS.COM

