

BENNINGTON

L U X U R Y P E R F O R M A N C E P O N T O O N S

BENNINGTON

In 1997, a small group of industry veterans set out with the intent of building the highest quality boats and providing the best service. Those same founders' values are still at the core of Bennington today. We felt then, and still believe that when you do the right thing, everything else falls into place. Bennington is a family run business with multiple generations of families still working in the business today. We invite you to be a part of our Bennington family.

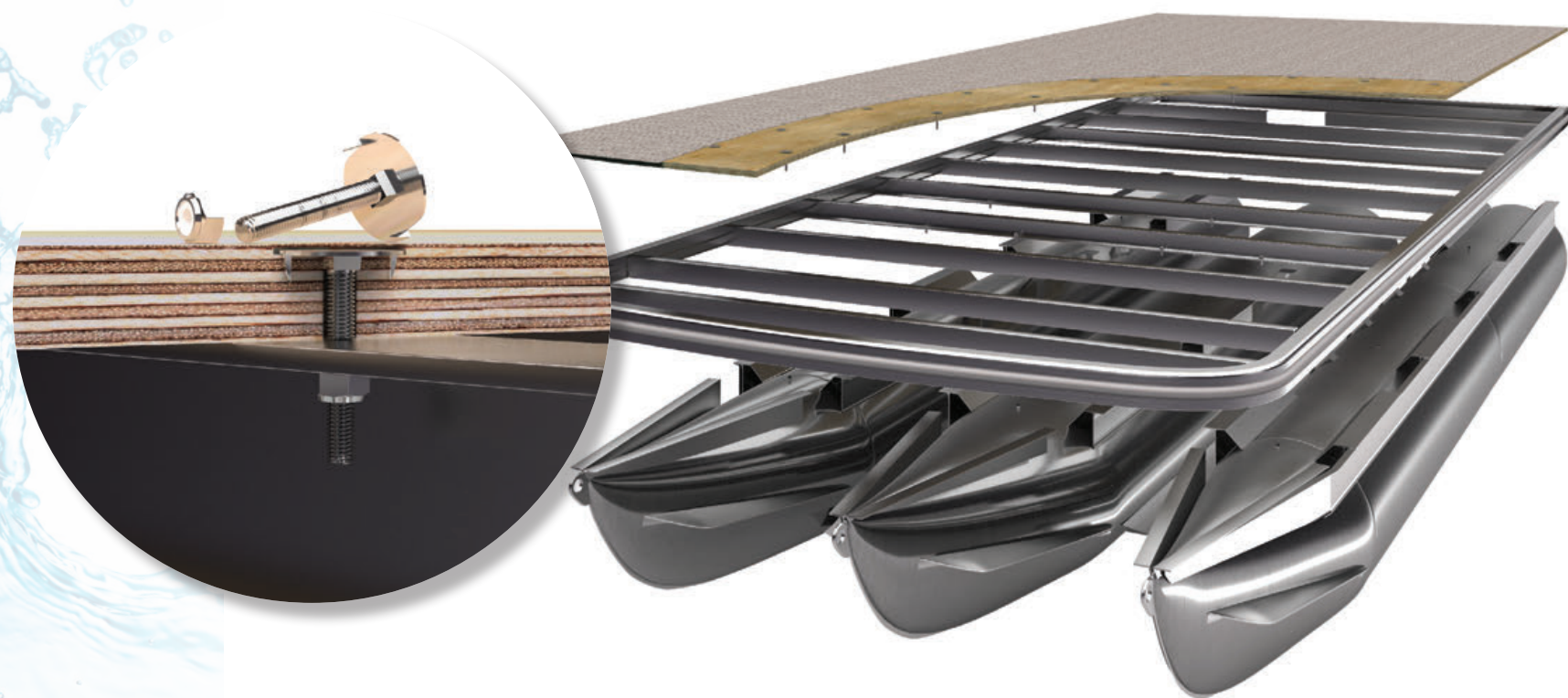
INDUSTRY LEADING 10-YEAR WARRANTY

Bennington customers are now offered as standard an industry-leading 10-year bow-to-stern warranty in addition to our lifetime structural warranty, giving you and your family the protection and assurance you deserve. Here at Bennington, we provide you with the finest built pontoon boats in the marketplace and want you, our valued customer, to know that we stand behind that commitment with the strongest warranty protection in the marketplace. Under the 10-year bow-to-stern + lifetime structural warranty, we cover 100% materials, parts and labor with no pro-rating, no third-party hand-offs, no warranty transfer fee and no "read between the lines" statements that leave you second guessing.



WHAT MAKES A BENNINGTON?

Each and every Bennington is designed, engineered and meticulously hand built with the same level of attention. From our entry level S Series to our flagship QX models; every boat is crafted using the highest quality materials. Whether choosing an ultra-premium vinyl, using stainless steel hardware or scrutinizing the selection of the raw materials - Every Detail Matters!



While other manufacturers screw their hulls together Bennington uses our exclusive **Thru-bolt™** technology on each and every hull. This system ensures far less flex providing a stable ride for years of boating pleasure and safety. With a combined experience of over 100 years, our team lives by the philosophy of using the best materials and never cutting corners. We proudly stand behind each and every Bennington with our no hassle 10-year bow-to-stern warranty while covering the deck and hull for a lifetime.

BENNINGTON

QX

It's what fiberglass dreams of becoming—a unique balance of unbridled performance & ultimate luxury. **Featured on pages 4 - 9**

Performance
Upgrades
Pages 64 - 65

Q

A sleek profile & stunning silhouette gives the Q Series a signature look that's impossible to ignore. **Featured on pages 10 - 21**

Interior / Exterior
Color Choices
Pages 66 - 71

Options pages
Page 72 - 77

Specs
Pages 78 - 79

R

Refined styling both inside & out, with attention to every detail, positions the R Series in a class by itself. **Featured on pages 22 - 29**

Floor Plans
Pages 80 - 89

Warranty
Pages 90

G

The G Series is the soul of Bennington—expert craftsmanship, innovative styling, & years of fine-tuning every detail. **Featured on pages 30 - 39**

SXP

From the inside out, the SX Premium achieves an elevated level of sophistication & performance. **Featured on pages 40 - 47**

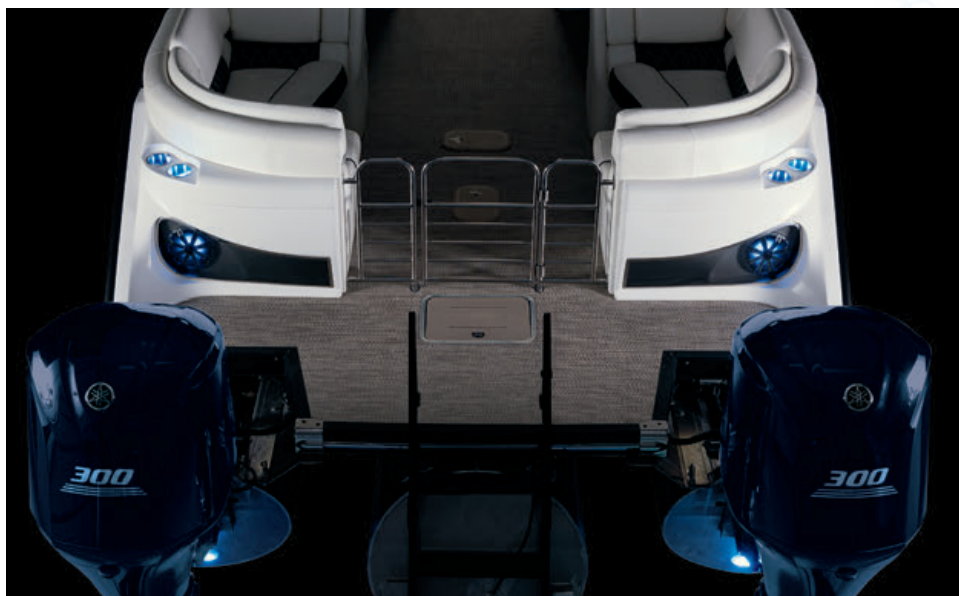
SX

It's arguably the best value in boating. The SX Series combines a luxury feel with an endless multitude of options. **Featured on pages 48 - 55**

S

Practicality at its pinnacle. The S Series is proof that luxury & affordability can indeed exist as one. **Featured on pages 56 - 63**

QX27 FASTBACK



Exterior

Ocean Blue with Blackout Package

Furniture Style

Pillowtop with Diamond Stitching

Vinyl

Glacier White Simtex with Carbon Simtex Accents

Flooring

Seagrass Slate

Accent Trim

New ZebraWood Slate

Performance Package

ESP 10

Features

- Fastback Aft with Rear Facing Speakers with Stainless Steel Gate
- Stainless Aft Trim & Mesh Package
- Fiberglass Side Panels
- Custom Ocean Blue Painted Engines
- Dual Console with Windscreen
- Cladded Sport Arch with Speakers
- Tapered Bow Deck

Upgrades

- Yamaha Optimus™ Joystick Control
- Simrad Fish/Depth Finder with GPS
- Stainless Steel Sink
- Smoke Tinted Windscreen



27 QXFBWA X2 Wide-Beam

QX25 SWINGBACK



Exterior
Metallic White with Blackout Package

Furniture Style
Pillowtop with Diamond Stitching

Vinyl
Glacier White Simtex with Carbon Diamante Accents

Flooring
Seagrass Slate

Accent Trim
New ZebraWood Slate

Performance Package
ESP

- Features**
- Flexible Swingback Seating with Rear Facing Speakers
 - Stainless Aft Trim & Mesh Package
 - Fiberglass Side Panels
 - Custom Metallic White Painted Engine
 - Dual Console with Windscreen

- Upgrades**
- Diamond Stitched Luxury Recliners
 - Push-Button Electric Pop-Up Mega Privacy
 - Smoke Tinted Windscreen
 - Stainless Steel Sink



25 QXSBWA

QX25 SWINGBACK



- Exterior**
Havana with Blackout Package
- Furniture Style**
Pillowtop with Diamond Stitching
- Vinyl**
Platinum Simtex with Perforated Platinum Accents
- Flooring**
Seagrass Beige
- Accent Trim**
New Zebrawood Beige
- Performance Package**
ESP

- Features**
 - Flexible Swingback Seating with Flip-Up Privacy Enclosure
 - Leather Wrapped Stainless Steel Corvina Steering Wheel
 - Fiberglass Side Panels
 - I/O Aft Swim Platform
 - Stainless Aft Trim & Mesh I/O Package
- Upgrades**
 - Diamond Stitched Luxury Recliners
 - Push-Button Electric Curved Bimini with Blue Ice LED Lights
 - Stainless Steel Sink
 - In-Floor Storage



25 QXSBW Inboard/Outboard

Q30 SWINGBACK



Exterior

Metallic Sorrel with Metallic White (Upper) Accent

Furniture Style

Pillowtop with Diamond Stitching

Vinyl

Platinum Simtex with Perforated Espresso Accents

Flooring

Seagrass Beige

Accent Trim

New Zebrawood Beige

Performance Package

ESP

Features

- Flexible Swingback Seating with Rear Facing Speakers
- Cladded Sport Arch with Speakers
- Bow Storage
- Starboard Aft Bench with Storage

Upgrades

- Custom Metallic Sorrel Painted Engines with Shatter Styling
- Yamaha Optimus™ Joystick Control
- Simrad Fish/Depth Finder with GPS
- Stainless Steel Swingback Keeper Rail with Gate
- Stainless Steel Sink
- Wash Down



30 QSBWA X2 Wide-Beam

Q30 FASTBACK



Exterior

Midnight Black with Metallic Silver Shatter Graphics & Blackout Package

Furniture Style

Pillowtop with Diamond Stitching

Vinyl

Driftwood Simtex with Perforated Sandstone Accents

Flooring

Seagrass Slate

Accent Trim

New Zebrawood Slate

Performance Package

ESP 10

Features

- Fastback Aft with Rear Facing Speakers with Stainless Steel Gate
- Dual Console with Windscreen
- Cladded Sport Arch with Speakers
- Leather Wrapped Stainless Steel Corvina Steering Wheel

Upgrades

- BRP Icon™ Joystick Control & Interactive Control System with Touch LCD Screen
- Custom Painted Engines with Shatter Styling
- RGB 13 Color Illuminated Cup Holders, Side Profile & Underwater Lights
- Simrad Fish/Depth Finder with GPS
- Smoke Tinted Windscreen



30 QSRFBWA X2 Wide-Beam

Q25 FASTBACK



Exterior

Havana with Metallic White (Lower) Accent

Furniture Style

Pillowtop with Diamond Stitching

Vinyl

Platinum Simtex with Perforated Platinum Accents

Flooring

Seagrass Beige

Accent Trim

New Zebra Wood Beige

Performance Package

ESP 10

Features

- Fastback Aft with Rear Facing Speakers with Stainless Steel Gate
- RGB 13 Color Controller & Kicker Illuminated Speakers

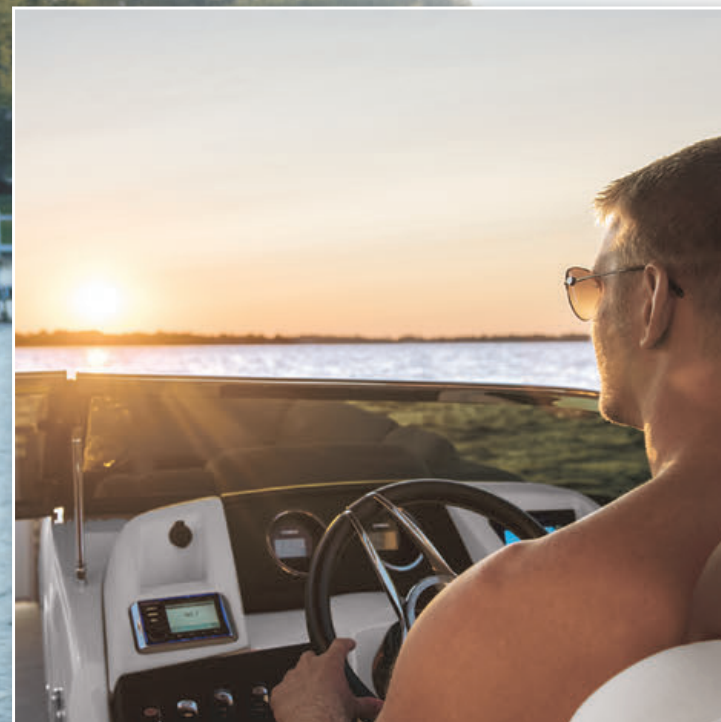
Upgrades

- RGB 13 Color Illuminated Cup Holders, Side Profile & Underwater Lights
- Custom Havana Painted Engine
- Removable Ski Pylon
- Privacy Chaise
- Elevated Helm
- Yamaha Command Link with DEC
- Simrad Fish/Depth Finder with GPS



25 QSRFB X1 Wide-Beam

Q25 SWINGBACK



Exterior

Metallic White with
Metallic Firecracker
Shatter Graphics

Furniture Style

Sport Pillowtop with
Diamond Stitching

Vinyl

Glacier White Simtex
with Firecracker
Diamante Accents

Flooring

Bamboo Beige

Accent Trim

New Zebrawood Beige

Performance Package

ESP

Features

- Cladded Sport Arch with Speakers
- External Rear Facing Speakers
- Leather Wrapped Stainless Steel Corvina Steering Wheel
- Dual Console with Windscreen
- Armrest USB Charging Port
- RGB Illumination with 13 Colors
- Bow Storage

Upgrades

- Custom Firecracker Painted Engine with Shatter Styling
- Smoke Tinted Windscreen
- Stainless Steel Swingback Keeper Rail with Gate
- Simrad Fish/Depth Finder with GPS



25 QSBWA

Q25 STERN RADIUS



Exterior
Smokey Granite with Metallic White Accent & Blackout Package

Furniture Style
Pillowtop with Diamond Stitching

Vinyl
Glacier White Simtex with Perforated Carbon Simtex Accents

Flooring
Vinyl Teak Slate

Accent Trim
New Zebra Wood Slate

Performance Package
ESP

- Features**
- Leather Wrapped Stainless Steel Corvina Steering Wheel
 - Cladded Sport Arch with Speakers
 - Bow Storage
 - Armrest USB Charging Port
 - RGB Illumination with 13 Colors

- Upgrades**
- In-Floor Storage
 - Removable Bow Gate Seat
 - Blackout Rails & Deck Trim



25 QSRA

Q25 CLUB



- Exterior**
Ocean Blue with Metallic White Accent
- Furniture Style**
Pillowtop with Diamond Stitching
- Vinyl**
Glacier White Simtex with Perforated Carbon Simtex Accents
- Flooring**
Seagrass Slate
- Accent Trim**
New ZebraWood Slate
- Performance Package**
ESP

- Features**
 - Flexible Club-Style Seating with Aft Bar & Stowable Sun Lounge Cushions
 - Leather Wrapped Stainless Steel Corvina Steering Wheel
 - RGB Illumination with 13 Colors
 - Armrest USB Charging Port
- Upgrades**
 - Removable Bow Gate Seat
 - Simrad Fish/Depth Finder with GPS
 - In-Floor Storage



25 QCL

R25 FASTBACK



Exterior

Metallic White with Metallic Red Shatter Graphics

Furniture Style

Pillowtop with Diamond Stitching

Vinyl

Platinum Simtex with Platinum Perforated Simtex Accents

Flooring

Vinyl Teak Beige

Accent Trim

New Zebrawood Beige

Performance Package

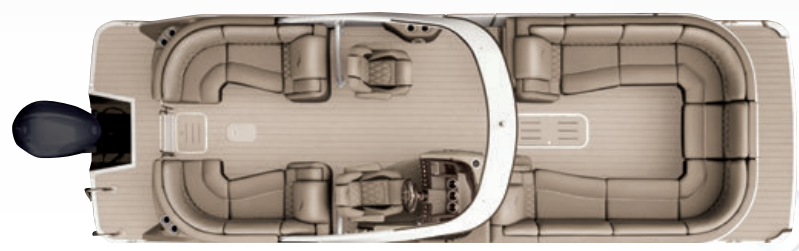
ESP

Features

- Fastback Aft with Rear Facing Speakers with Stainless Steel Gate
- Cladded Sport Arch with Speakers
- RGB Illumination with 13 Colors
- 12 Cup Holders
- Armrest USB Charging Port

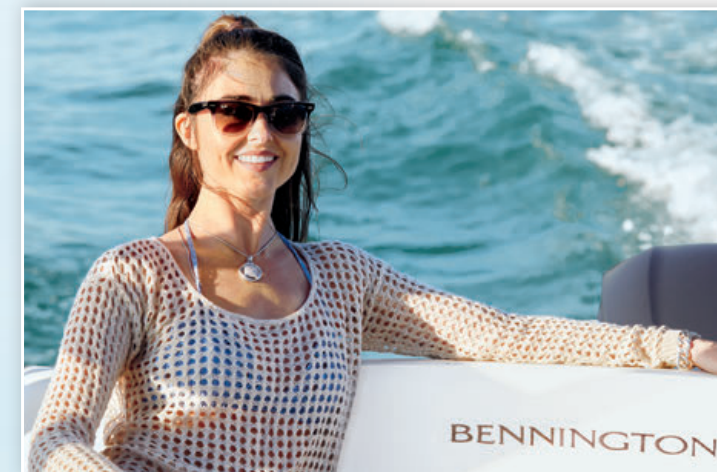
Upgrades

- In-Floor Storage
- Removable Bow Gate Seat
- Elevated Helm
- Leather Wrapped Stainless Steel Corvina Steering Wheel
- Simrad Fish/Depth Finder with GPS



25 RSFBA

R23 SWINGBACK



Exterior

Metallic White with Metallic Blue Shatter Graphics

Furniture Style

Pillowtop with Diamond Stitching

Vinyl

Glacier White Simtex with Carbon Perforated Simtex Accents

Flooring

Vinyl Teak Slate

Accent Trim

New Zebra Wood Slate

Performance Package

ESP

Features

- Flexible Swingback Seating with Rear Facing Speakers
- New Open Sport Arch
- RGB Illumination with 13 Colors
- Dual Console with Windscreen
- Aft Cupholders with Kicker Stereo Controls
- Armrest USB Charging Port

Upgrades

- Roswell 8" + 6" Rotatable Speakers
- Leather Wrapped Stainless Steel Corvina Steering Wheel
- Smoke Tinted Windscreen
- Bow Gate Seat
- Stainless Steel Sink



23 RSBWA

R25 BAR



Exterior
Smokey Granite with Havana Accent & Blackout Package

Furniture Style
Pillowtop with Diamond Stitching

Vinyl
Platinum Simtex with Espresso Perforated Simtex Accents

Flooring
Seagrass Beige

Accent Trim
New Zebrawood Beige

Performance Package
ESP

- Features**
- Bar Seating & Starboard Galley with Solid Surface Countertops
 - Sink with Swing-a-way Faucet
 - RGB Illumination with 13 Colors
 - Armrest USB Charging Port

- Upgrades**
- Curved Electric Bimini
 - Leather Wrapped Stainless Steel Corvina Steering Wheel
 - Simrad Fish/Depth Finder with GPS



25 RBR

R23 STERN LOUNGE



Exterior
Metallic White with
Smokey Granite Accent

Furniture Style
Pillowtop with
Diamond Stitching

Vinyl
Glacier White Simtex
with Carbon Perforated
Simtex Accents

Flooring
Vinyl Teak Slate

Accent Trim
New Zebrawood Slate

Performance Package
ESP

Features

- New Open Sport Arch
- Armrest USB Charging Port
- RGB Illumination with 13 Colors

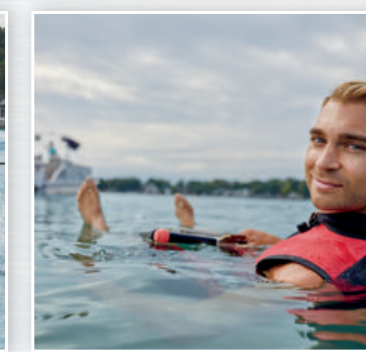
Upgrades

- Simrad Fish/Depth Finder with GPS
- 8" White Kicker Arch Speakers with RGB Illumination with 13 Colors
- In-Floor Storage
- Removable Bow Gate Seat
- Removable Ski Pylon
- Leather Wrapped Stainless Steel Corvina Steering Wheel



23 RCWA

G25 SWINGBACK



Exterior
Metallic White
with Metallic Blue
Shatter Graphic

Furniture Style
G Sport

Vinyl
Sandstone Simtex with
Driftwood & Perforated
Ocean Blue Accents

Flooring
Seagrass Slate

Accent Trim
New Zebrawood Slate

Performance Package
ESP

Features

- New Open Sport Arch
- Flexible Swingback Seating with Flip-up Privacy
- Stainless Steel RGB Illuminated Rear Emblem with Rear Facing Speakers with 13 Colors
- Aft Cup Holders with Kicker Stereo Controls

Upgrades

- Roswell 8" + 6" Rotatable Speakers
- Stainless Steel Swingback Keeper Rail with Gate
- In-Floor Storage
- Roswell Wakeboard Racks
- Extra-Wide Recliners



25 GSBA

G25 SWINGBACK



Exterior

Midnight Black with Firecracker Accent with Blackout Package

Furniture Style

G Sport

Vinyl

Tuscan Dune Simtex with Napa Beige Perforated Firecracker Accents

Flooring

Vinyl Teak Beige

Accent Trim

New Zebrawood Slate

Performance Package

ESP

Features

- Flexible Swingback Seating
- Stainless Steel RGB Illuminated Rear Emblem with Rear Facing Speakers with 13 Colors
- Aft Cup Holders with Kicker Stereo Controls

Upgrades

- New Painted Open Sport Arch
- 8" Black Kicker Arch Speakers with RGB Illumination with 13 Colors
- In-Floor Storage
- Yamaha DEC with Bennington Edge-Lit Gauges
- 4 Step Stainless Steel Ladder
- Bennington Stainless Steel Pop-Up Cleats
- Blackout Rails, Deck Trim & Rub Rails



25 GSBA

G23 SWINGBACK



Exterior

Metallic White with Metallic Havana Shatter Graphics

Furniture Style

Pillowtop with Dzingo Pattern Accents

Vinyl

Napa Beige Simtex with Tuscan Dune Diamante Accents

Flooring

Seagrass Beige

Accent Trim

New Zebrawood Beige

Performance Package

ESP

Features

- Aft Cup Holders with Kicker Stereo Controls
- RGB Illumination with 13 Colors
- Stainless Steel RGB Illuminated Rear Emblem with Rear Facing Speakers with 13 Colors
- Flexible Swingback Seating with Flip-Up Privacy

Upgrades

- New Dzingo Accent Pattern
- 4 Step Stainless Steel Ladder
- Stainless Steel Swingback Keeper Rail with Gate
- Removable Bow Gate Seat
- New Metallic Havana Shatter Graphics
- LED Stainless Steel Docking Lights



23 GSB

G25 FASTBACK



- | | |
|---|--|
| <p>Exterior
Smokey Granite with Metallic Sorrel Accent & Blackout Package</p> <p>Furniture Style
Pillowtop with Diamond Stitching</p> <p>Vinyl
Tuscan Dune Simtex with Espresso Diamante Accents</p> <p>Flooring
Bamboo Beige</p> <p>Accent Trim
New ZebraWood Beige</p> <p>Performance Package
ESP</p> | <p>Features</p> <ul style="list-style-type: none"> • Fastback Aft with Rear Facing Speakers with Stainless Steel Gate • Large 74" Port Bench with Storage • 17 Cup Holders • RGB Illumination with 13 Colors <p>Upgrades</p> <ul style="list-style-type: none"> • Push-Button Electric Curved Bimini with Illumination • Yamaha DEC with Bennington Edge-Lit Gauges • Blackout Rails, Ladder, Bimini Frame, & Rub Rail • Elevated Helm |
|---|--|



25 GSRCFB

G22 CRUISE & FISHING



Exterior
Golden Emerald with Metallic White Accent

Furniture Style
Pillowtop
Diamond Pressed

Vinyl
Napa Beige Simtex with Tuscan Dune Diamante Accents

Flooring
Teak Vinyl Beige

Accent Trim
New Zebrawood Beige

Performance Package
SPS

Features

- Aft Fishing Station with Livewell & Rod Holders
- RGB Illumination with 13 Colors
- 12 Cup Holders

Upgrades

- New Starboard Fishing Rod Locker
- Port Flip-Up Privacy with Porta-Potty
- Simrad Fish/Depth Finder with GPS
- In-Floor Storage
- Stainless Steel LED Docking Lights
- Bennington Stainless Steel Pop-Up Cleats



22 GS

SXP25 SWINGBACK



Exterior

Metallic White with Metallic Golden Emerald Shatter Graphics

Furniture Style

Pillowtop Diamond Pressed

Vinyl

Napa Beige Simtex with Espresso Simtex Accents

Flooring

Seagrass Beige

Accent Trim

New Zebra Wood Beige

Performance Package

SPS+

Features

- Flexible Swingback Seating

Upgrades

- Stainless Steel RGB Illuminated Rear Emblem with Rear Facing Speakers with 13 Colors
- Stainless Steel Swingback Keeper Rail with Gate
- Elevated Helm
- Garmin Fish/Depth Finder with GPS
- Kicker Sub, Amp, & Stereo with Bluetooth & Aux Input
- Stainless Steel LED Docking Lights
- RGB Illumination with 13 Colors
- Custom Steering Wheel



25 SSBXP

SXP23 FASTBACK



Exterior
Metallic White with Firecracker Accent

Furniture Style
Pillowtop Diamond Pressed

Vinyl
Napa Beige Simtex with Tuscan Dune Simtex Accents

Flooring
Seagrass Beige

Accent Trim
New ZebraWood Beige

Performance Package
SPS+

Features

- Fastback Aft with Rear Facing Speakers with Stainless Steel Gate
- 17 Cup Holders

Upgrades

- Elevated Helm
- Curved Bimini
- Saltwater Package
- Simrad Fish/Depth Finder with GPS
- Kicker Sub, Amp & Stereo with Bluetooth & Aux Input
- Stainless Steel LED Docking Lights
- Removable Bow Gate Seat



23 SSRFBXP

SXP 25 DINETTE



- Exterior**
Metallic Sorrel with Metallic White Accent
 - Furniture Style**
Pillowtop Diamond Pressed
 - Vinyl**
Napa Beige Simtex with Tuscan Dune Simtex Accents
 - Flooring**
Seagrass Beige
 - Accent Trim**
Espresso Teak
 - Performance Package**
SPS
- Features**
 - Dinette Seating
 - Aft Bar Storage with Stainless Steel Wine Rack
 - Solid Surface Countertops
 - 16 Cup Holders
 - Upgrades**
 - Kicker KMC10 Stereo with Bluetooth & Aux Input
 - RGB Illumination with 13 Colors
 - Elevated Helm
 - Removable Bow Gate Seat
 - Bimini with Blue Ice Illumination



25 SPDXP

SXP 21 CRUISE



Exterior
Smokey Granite with
Metallic White Accent
& Blackout Package

Furniture Style
Horizontal Diamond
Pressed

Vinyl
Driftwood Simtex with
Carbon Simtex Accents

Flooring
Seagrass Slate

Accent Trim
New ZebraWood Slate

Performance Package
SPS

Features
• Aft Sundeck with Storage

Upgrades
• Simrad Fish/Depth
Finder with GPS
• Blackout Rails, Ladder,
Bimini Frame & Rub Rail
• RGB Illumination
with 13 Colors
• Stainless Steel LED
Docking Lights
• Saltwater Package



21 SLXP

SX25 STERN RADIUS



Exterior
Sunset Red with
Metallic White Accent

Furniture Style
Pillowtop Diamond
Pressed

Vinyl
Napa Beige Simtex
with Tuscan Dune
Simtex Accents

Flooring
Seagrass Beige

Accent Trim
New Zebrawood Beige

Performance Package
SPS

Features
• Large 64" Port Bench
with Storage

Upgrades
• Stainless Steel LED
Docking Lights
• In-Floor Storage
• 4 Step Stainless Steel Ladder
• Saltwater Package
• Bennington Stainless
Steel Pop-Up Cleats
• Custom Steering Wheel



25 SSRX

SX23 STERN LOUNGE



Exterior
Metallic White with Havana Accent

Furniture Style
Pillowtop Diamond Pressed

Vinyl
Napa Beige Simtex with Tuscan Dune Simtex Accents

Flooring
Seagrass Beige

Accent Trim
New Zebrawood Beige

Performance Package
32" Twin Elliptical

Features

- Stern Lounge Seating with Storage
- Large Starboard Aft Deck

Upgrades

- Saltwater Package
- Kicker KMC10 Stereo with Bluetooth & Aux Input
- Kicker Speakers
- Dimensional Chrome Decals
- Curved Bimini
- Starboard Bow Seat Cooler
- Stainless Steel LED Docking Lights
- Bennington Stainless Steel Pop-Up Cleats



23 SSLX

SX22 CRUISE



Exterior
Firecracker with Metallic White Accent

Furniture Style
Standard Monotone

Vinyl
Affluence Napa Beige with Firecracker Diamante Accents

Flooring
Seagrass Beige

Accent Trim
New Zebrawood Beige

Features

- Aft Sundeck with Storage
- Corner Starboard Aft Deck

Upgrades

- Kicker KMC10 Stereo with Bluetooth & Aux Input
- 10ft Double Bimini
- Crystal Cap Chrome Decals
- Starboard Bow Seat Cooler
- Stainless Steel LED Docking Lights
- Custom Steering Wheel
- Heavy Duty Rub Rail



22 SLX

SX22 FISHING



Exterior
Metallic Sorrel with
Metallic White Accent

Furniture Style
Standard Monotone

Vinyl
Affluence Napa
Beige with Espresso
Diamante Accents

Flooring
Seagrass Beige

Accent Trim
Espresso Teak

Performance Package
SPS

Features

- Aft Fishing Station with Livewell & Rod Holders
- 11 Cup Holders
- Bow Corner Livewell & Storage Boxes

Upgrades

- Console with Integrated Bench, Livewell, & Bait Bucket
- Trolling Motor Gate & Wiring Harness
- New Starboard Fishing Rod Locker
- Deluxe Bass Seats
- Simrad Fish/Depth Finder with GPS
- Flip-Up Privacy with Porta-Potty
- Color Matched Docking Lights (Napa Beige)
- In-Floor Storage



22 SFXAPG

S21 CRUISE



Exterior
Ocean Blue with
Metallic White Accent

Furniture Style
Standard Monotone

Vinyl
Affluence Napa Beige
with Ocean Blue
Diamante Accents

Flooring
Seagrass Beige

Accent Trim
Espresso Teak

Features

- Aft Sundeck with Storage
- Corner Starboard Aft Deck

Upgrades

- S-Series Stowable Cup Holders
- V2 Pure-Comfort Recliner
- Dimensional Chrome Decals
- Stainless Steel LED Docking Lights
- Custom Steering Wheel
- Flip-Up Privacy with Porta-Potty
- Heavy Duty Rub Rail with Bennington Stainless Steel Cleats



21 SL

S20 FISHING



Exterior
Havana with Metallic Sorrel Accent

Furniture Style
Standard Monotone

Vinyl
Affluence Napa
Beige with Espresso Diamante Accents

Flooring
Seagrass Beige

Accent Trim
Espresso Teak

- Features**
- Aft Fishing Station with Livewell & Rod Holders
 - 4 Foldable Bass Seats
 - Bow Corner Livewell & Storage Boxes
 - Mid-Ship Sundeck with Storage

- Upgrades**
- Pro Angler's Fish Station with Large Livewell & Tackle Boxes
 - Trolling Motor Gate & Wiring Harness
 - New Starboard Fishing Rod Locker
 - Garmin Fish/Depth Finder with GPS
 - Color Matched Docking Lights (Napa Beige)
 - V2 Pure-Comfort Recliner



20 SF

S168 CRUISE



Exterior

Firecracker

Furniture Style

Standard Monotone

Vinyl

Affluence Napa Beige with Firecracker Diamante Accents

Flooring

Seagrass Beige

Accent Trim

New Zebrawood Beige

Features

- Easy to Trailer 8' Narrow-Beam Deck & Hull
- Portable Gas Tank
- Large 86" x 44" Aft Corner Bench with Storage

Upgrades

- Hide-A-Way Stainless Steel Port Side Gate Ladder
- Tilt Steering
- Color Matched Docking Lights (Napa Beige)



168 SLE Narrow-Beam

S188 FISHING



Exterior
Golden Emerald

Furniture Style
Standard Monotone

Vinyl
Affluence
Napa Beige
with Emerald
Diamante Accents

Flooring
Seagrass Beige

Accent Trim
Espresso Teak

- Features**
- Easy to Trailer 8' Narrow-Beam Deck & Hull
 - 3 Foldable Bass Seats
 - Corner Starboard Aft Deck
 - Corner Storage Box with Cup Holders

- Upgrades**
- Trolling Motor Gate & Wiring Harness
 - Garmin Fish/Depth Finder with GPS
 - Tilt Steering



188 SF3 Narrow-Beam

PERFORMANCE PACKAGES

Shallow Draft: Helps when navigating shallow waters by riding higher in the water.

K Keels: Reinforced guides placed at the bottom of the tube to protect it in shallow water and improve tracking while underway. Solid keels are standard on all models.

PF Performance Foils: Similar to a wing of a plane, these are placed on the bottom side of the tubes to provide hydrodynamic lift. Improved acceleration, top speed and stability are added benefits. Performance foils in combination with a three tube configuration will also dramatically increase the boat's turning performance, especially during heavy banking.

LS Lifting Strakes: Add lift, decrease splashing and increase top speed as much as 4.8 miles per hour, depending on engine selection. For optimum performance, lifting strakes are recommended for engines rated 115hp or greater and for boats exceeding 30 mph. Lifting strakes are recommended for 90 hp or greater on boats with twin elliptical pontoons.

HS Seastar® Hydraulic Steering: Eases steering effort with higher horsepower engines. Expect two-handed handling in hard turns. Recommended for engines rated 115 hp or greater.

PS Power-Assist Hydraulic Steering: Powered by an electronically controlled hydraulic pump connected to the SeaStar® system. The electric pump "does the work for you" so the driver can expect incredible handling and turning with little effort. Recommended for engines rated 150 hp or greater.

W Under-Deck Wave Shield: Deflects water from the bottom of the deck, which reduces "surging" and enhances the soft, quiet ride in rough water.

Check with your local dealer for current engine hp certifications for specific models and configurations.

* Illustrations and descriptions depict a typical build. Configurations will vary by specific model, length and options.



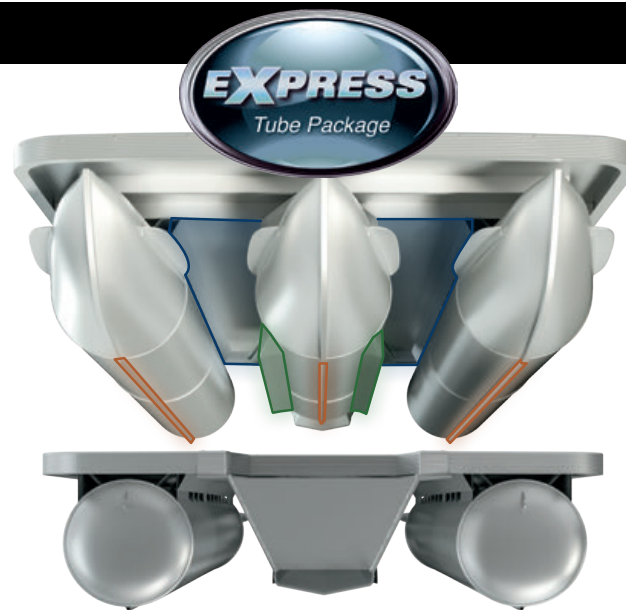
32" TWIN ELLIPTICAL

Shallow Draft	Best
Stability	Best
Watersports	Good
Outer Tubes	32" Elliptical
Center Tube	n/a

Bennington's exclusive Elliptical Pontoons combined with lifting strakes, performance foils, solid round keels and an under-deck wave shield offer incredible two-tube performance. Each elliptical pontoon adds over 1,000 lbs. of additional buoyancy, allowing the boat to sit higher and run faster.

These pontoons increase deck stability both fore and aft as well as side to side. Available as a Freshwater or Saltwater package.

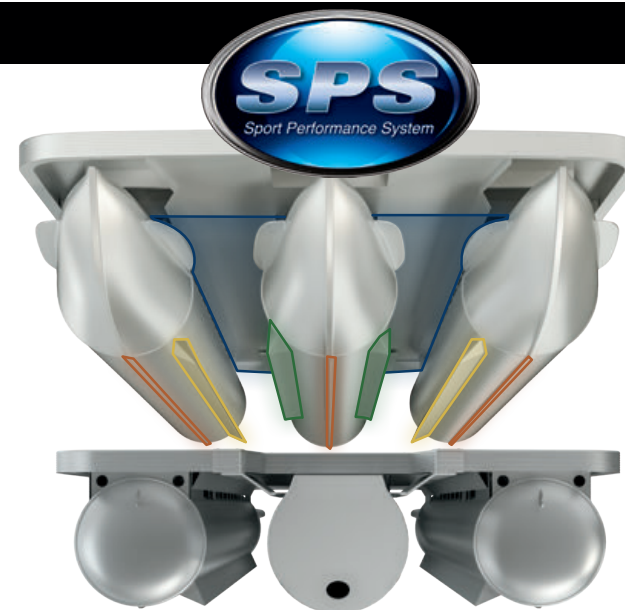
Saltwater package includes saltwater anodes and sealed lifting strakes/performance foils.



EXPRESS

Shallow Draft	Good
Stability	Good
Watersports	Better
Outer Tubes	25"
Center Tube	25" Express Length

The Express Tube Package offers increased bow lift for lighter, lower horsepower engines. The package includes a modified center tube with lifting strakes and a modified under-deck wave shield. Add SeaStar® hydraulic steering for engines greater than 115 hp (25" tubes required).



SPS & SPS+

Shallow Draft	Good
Stability	Better
Watersports	Best
Outer Tubes	25"
Center Tube	25" Full Length

SPS offers handling and performance characteristics similar to ESP in a lighter, more affordable package. SPS is designed for 4 cylinder engines 200 hp or less. The package includes 3 full-length 25" diameter pontoons, lifting strakes on the center pontoon, performance foils on the inside of the outer pontoons, under-deck wave shield, SeaStar® hydraulic steering and a 32-gallon transom fuel tank on select models.

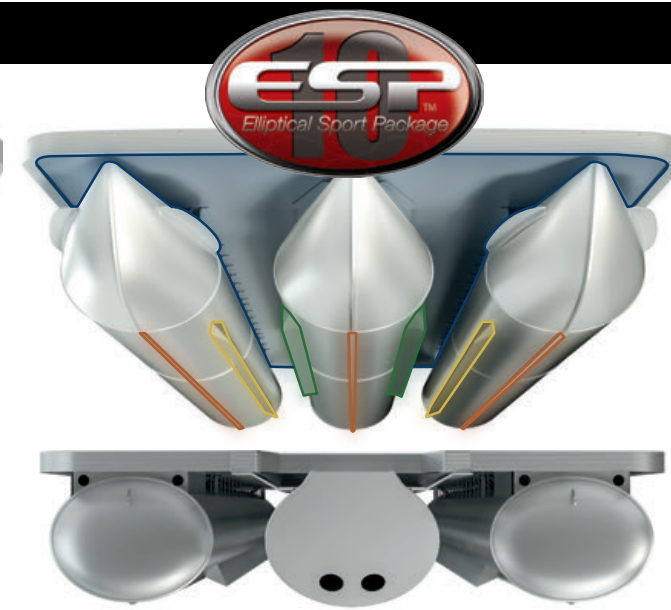
SPS+ is for engines up to 250 hp and has heavier duty construction similar to ESP. Upgrades include a composite transom, additional brackets, internal bracing, weld spacing and an aluminum thickness of 0.100 throughout.



ESP

Shallow Draft	Better
Stability	Best
Watersports	Best
Outer Tubes	25"
Center Tube	32" Elliptical

Top of the line in performance for boats with 8' 6" beams. Offers enhanced stability and water displacement with quick planing and handling characteristics that rival a fiberglass sport boat. Designed for high horsepower applications, ESP is optional on outboard models and comes standard on all I/O models. It includes two 25" diameter outer pontoons with performance foils, splash fins and 0.100 (0.125 optional) gauge aluminum, a patented 32" Elliptical center pontoon with lifting strakes and an under-deck wave shield. The power-assist steering option and the center fuel tank upgrade are recommended for boats equipped with engines rated at 200 hp or greater and are required on full windscreen models.



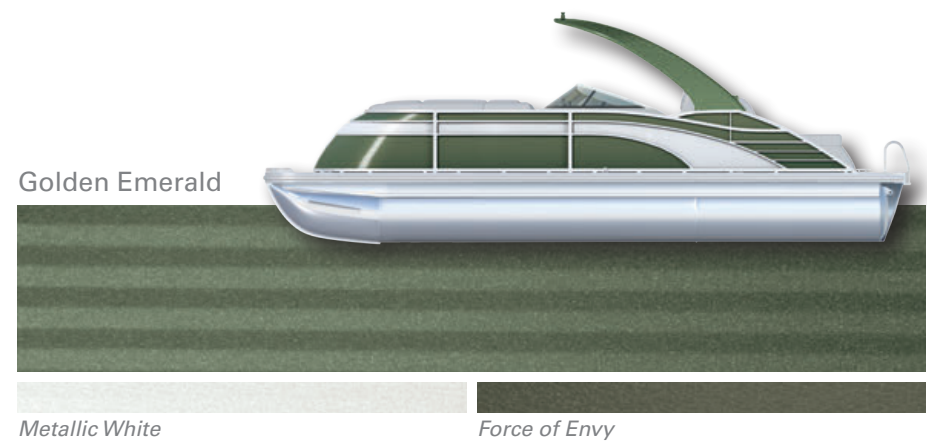
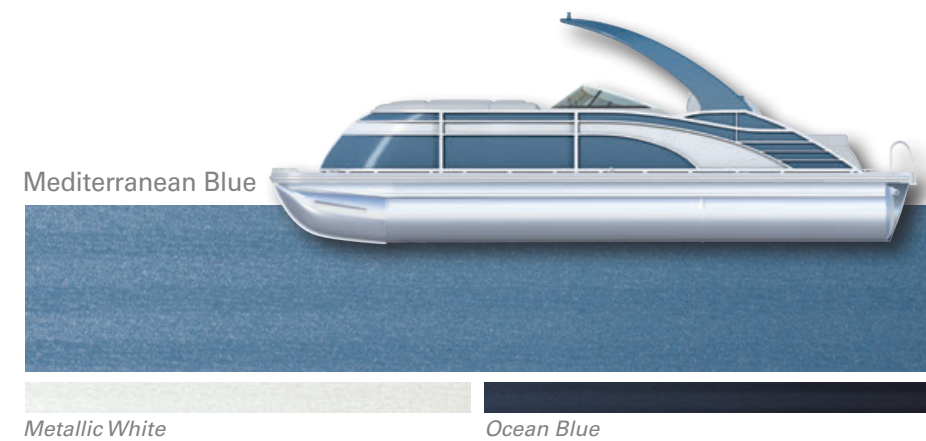
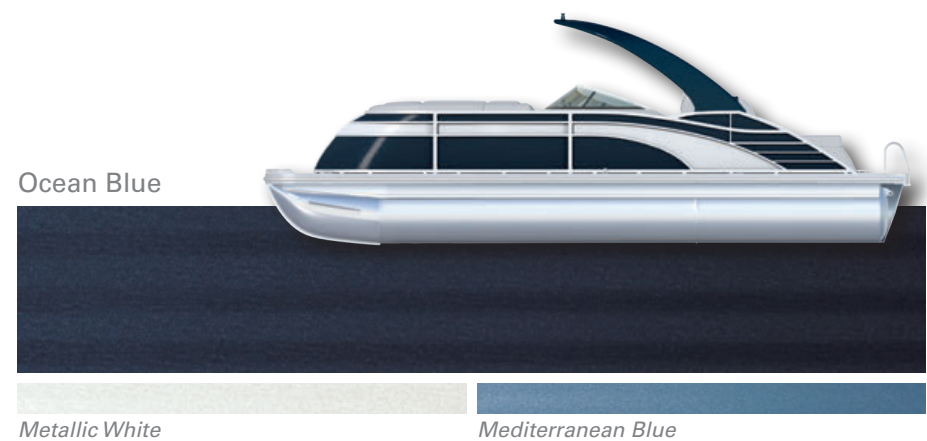
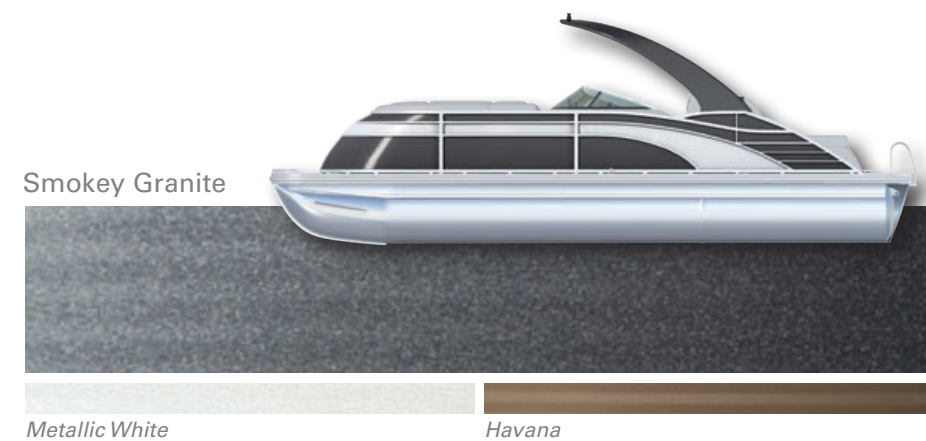
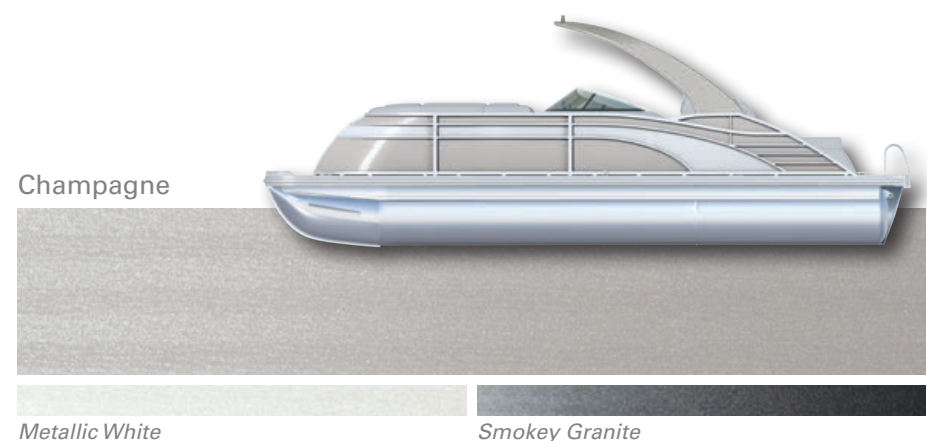
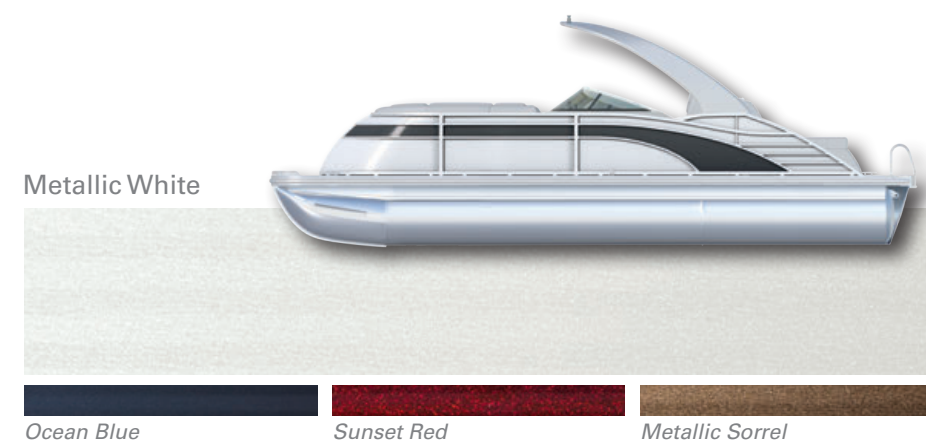
ESP-10' WIDE-BEAM

Shallow Draft	Good
Stability	Best
Watersports	Good
Outer Tubes	32" Elliptical
Center Tube	32" Elliptical

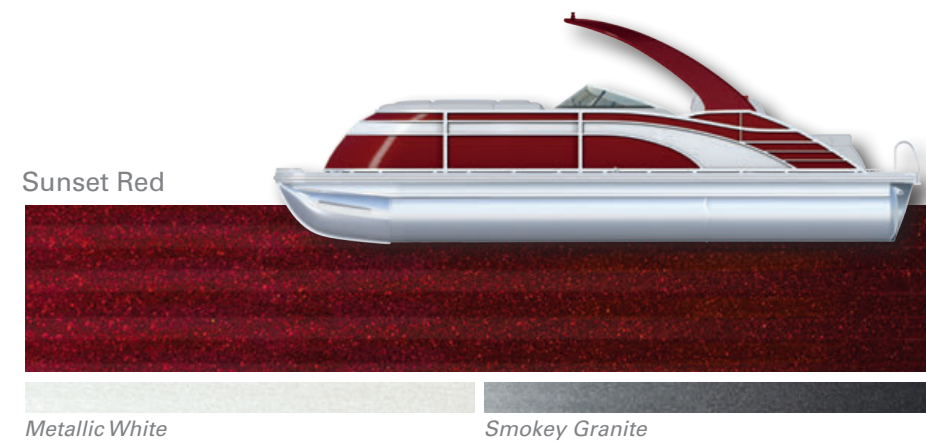
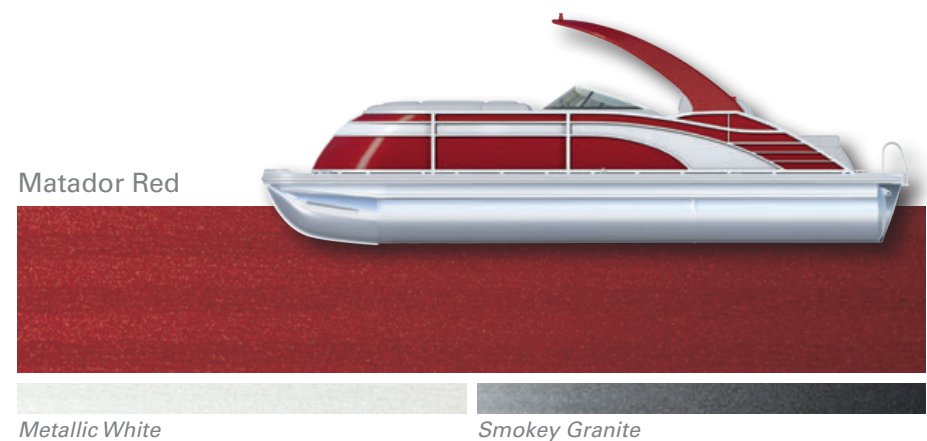
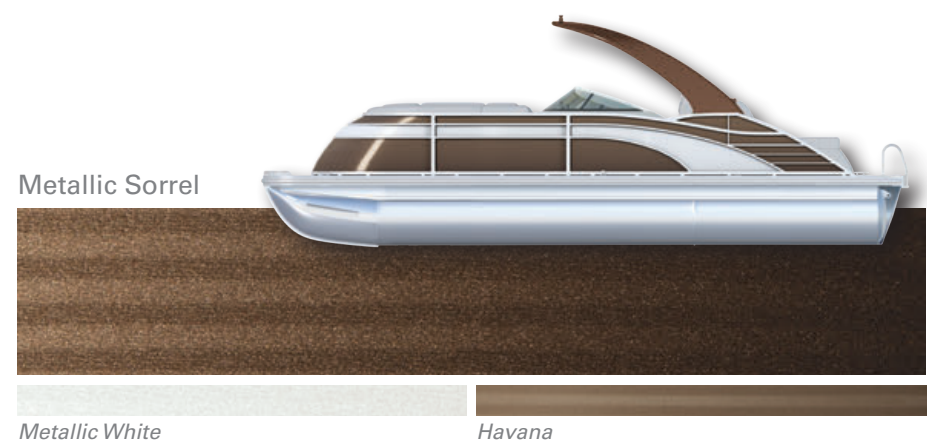
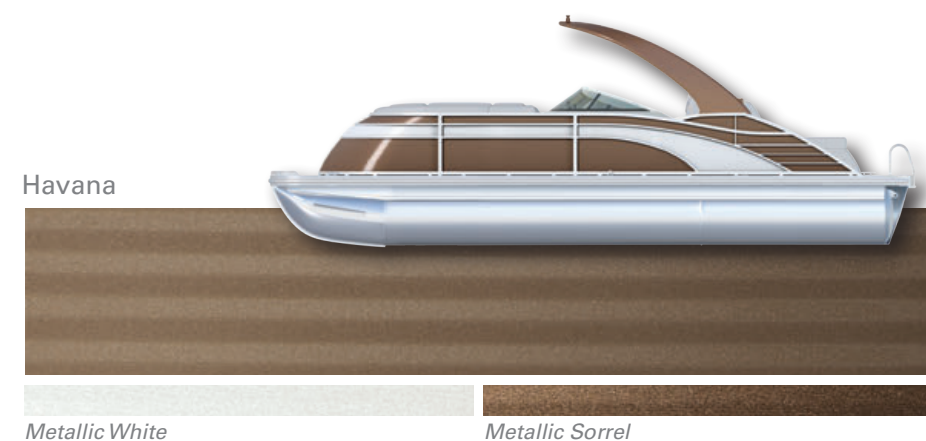
The ESP-10 is engineered to provide peak performance on a 10 foot wide-beam boat. It includes performance foils, lifting strakes, splash fins, under-deck wave shield, and three 32" wide elliptical pontoons made of 0.125 gauge aluminum internally reinforced. (Single engine model shown, also available as twin engine configuration.)



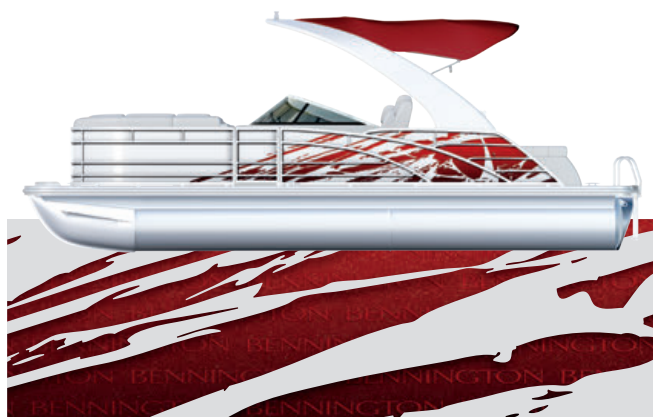
EXTERIOR COLORS & POPULAR ACCENTS



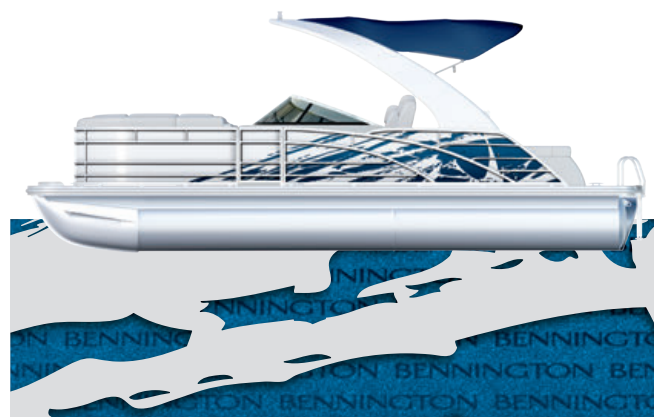
EXTERIOR COLORS & POPULAR ACCENTS



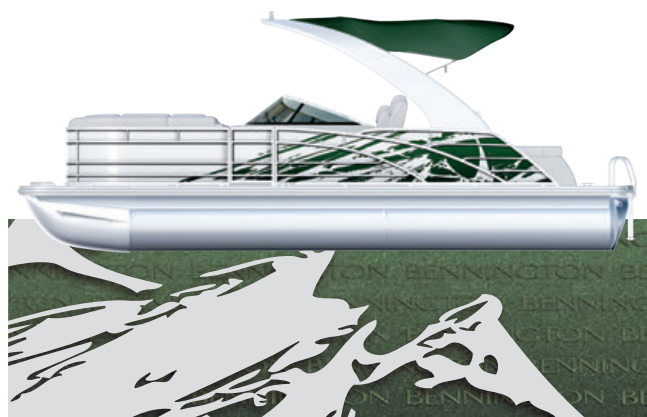
EXTERIOR STYLING



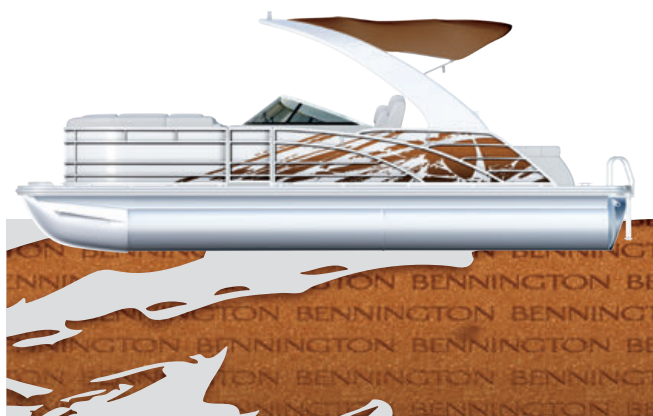
Metallic Red



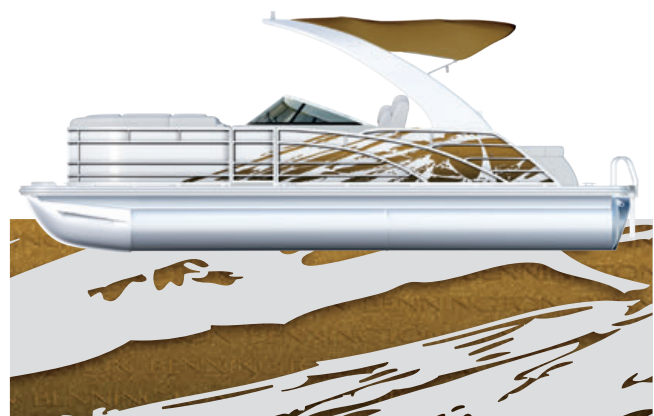
Metallic Blue



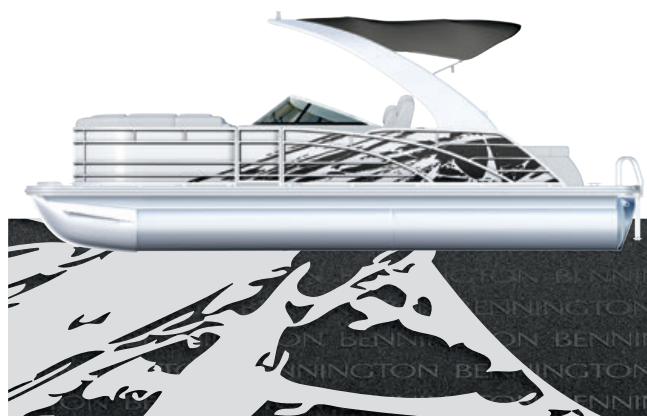
Metallic Green



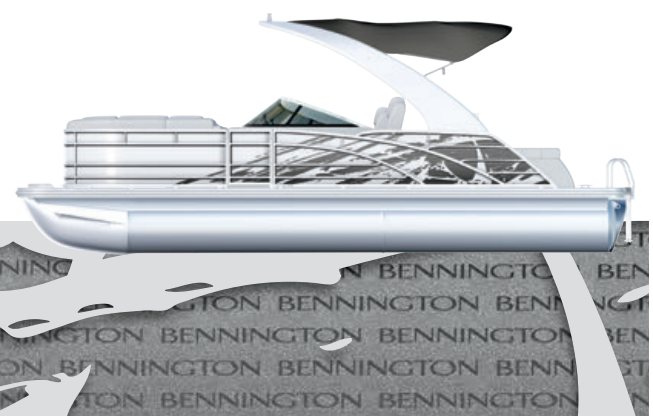
Metallic Firecracker



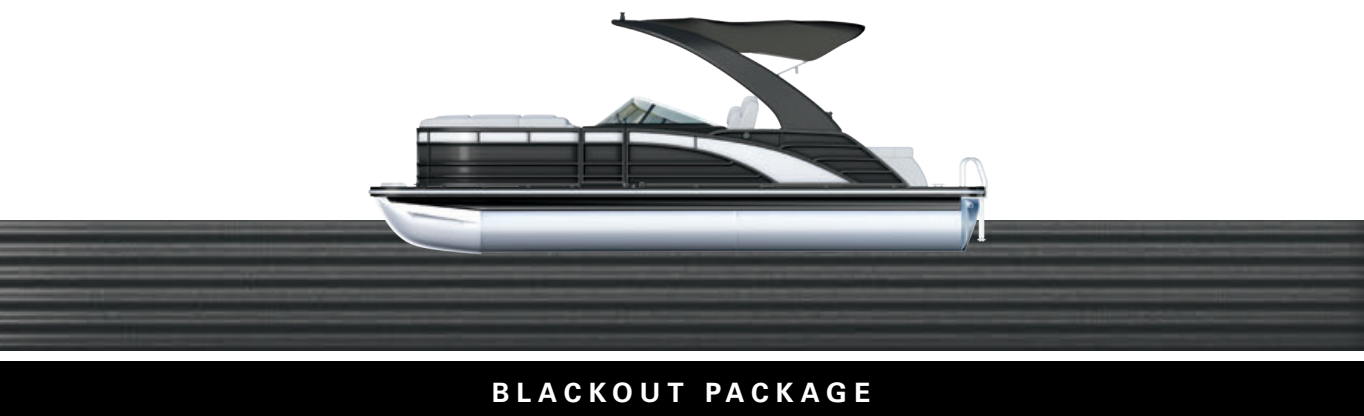
Metallic Havana



Metallic Smokey Granite

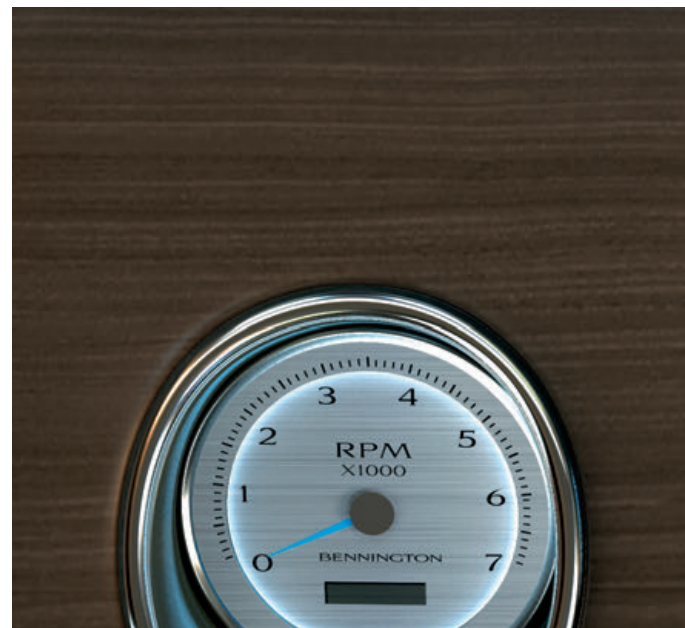


Metallic Silver



BLACKOUT PACKAGE

TRIM ACCENTS



Zebra wood Beige

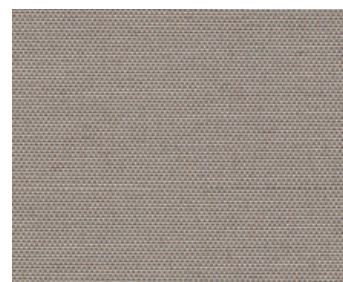


Zebra wood Slate



Espresso Teak

CANVAS COLORS



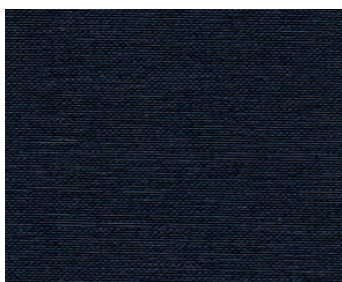
Champagne



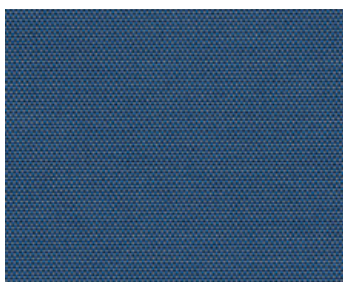
Smokey Granite



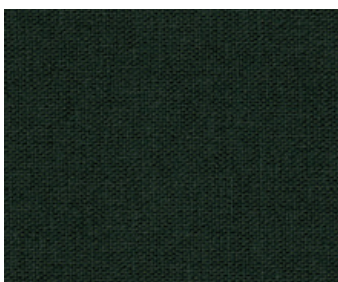
Black



Ocean Blue



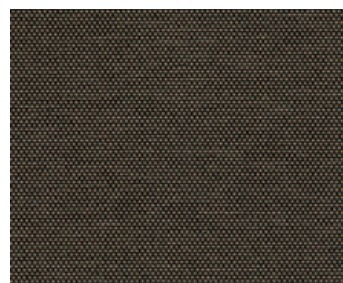
Mediterranean Blue



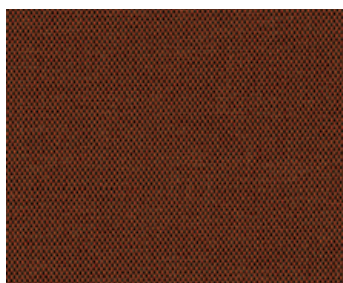
Emerald



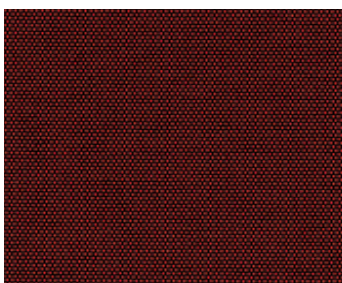
Taupe



Sorrel



Firecracker



Matador Red



Sunset Red

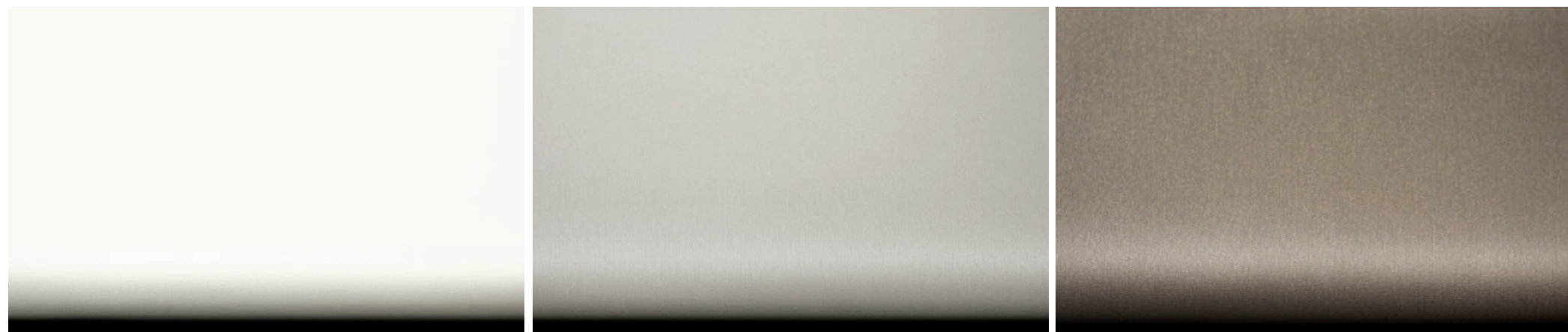
INTERIOR MAIN COLORS



Platinum

Napa Beige

Tuscan Dune

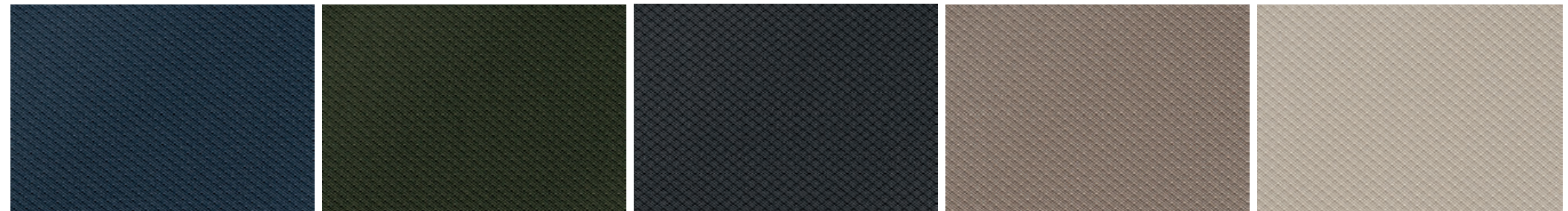


Glacier White

Sandstone

Driftwood

INTERIOR ACCENT COLORS



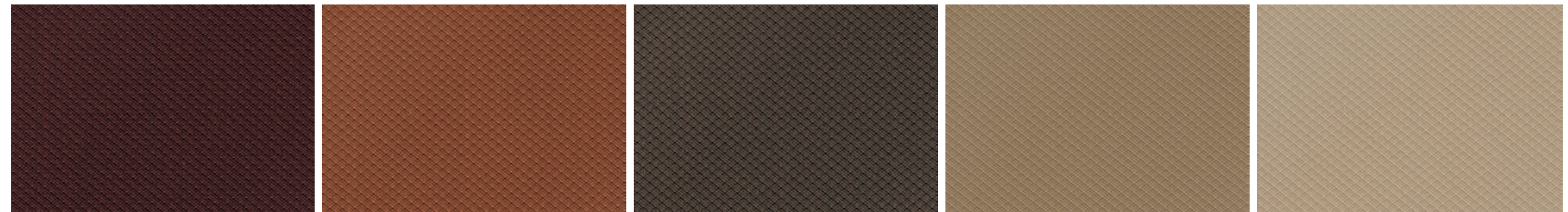
Ocean Blue

Emerald

Carbon

Driftwood

Sandstone



Sunset Red

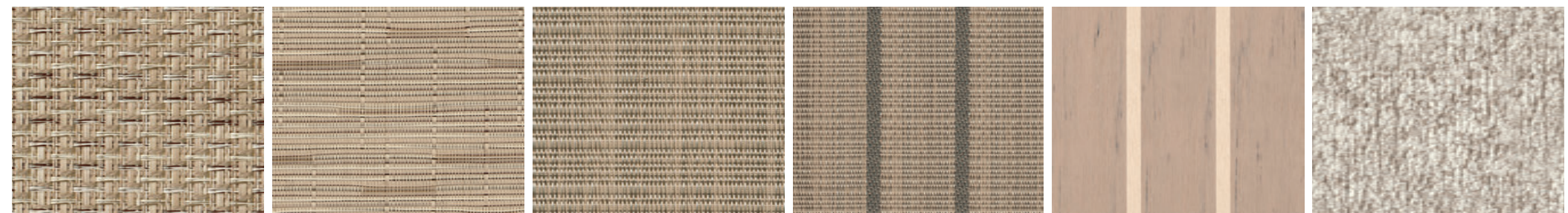
Firecracker

Espresso

Tuscan Dune

Napa Beige

FLOORING



Seagrass Beige

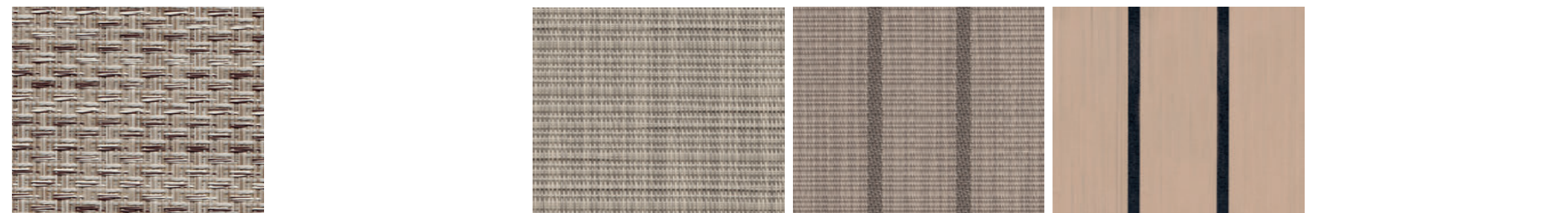
Bamboo Beige

Woven Vinyl Beige

Vinyl Teak Beige

Aged Teak w/ Ivory Lines

Marideck Vinyl



Seagrass Slate

Woven Vinyl Slate

Vinyl Teak Slate

Aged Teak w/ Black Lines

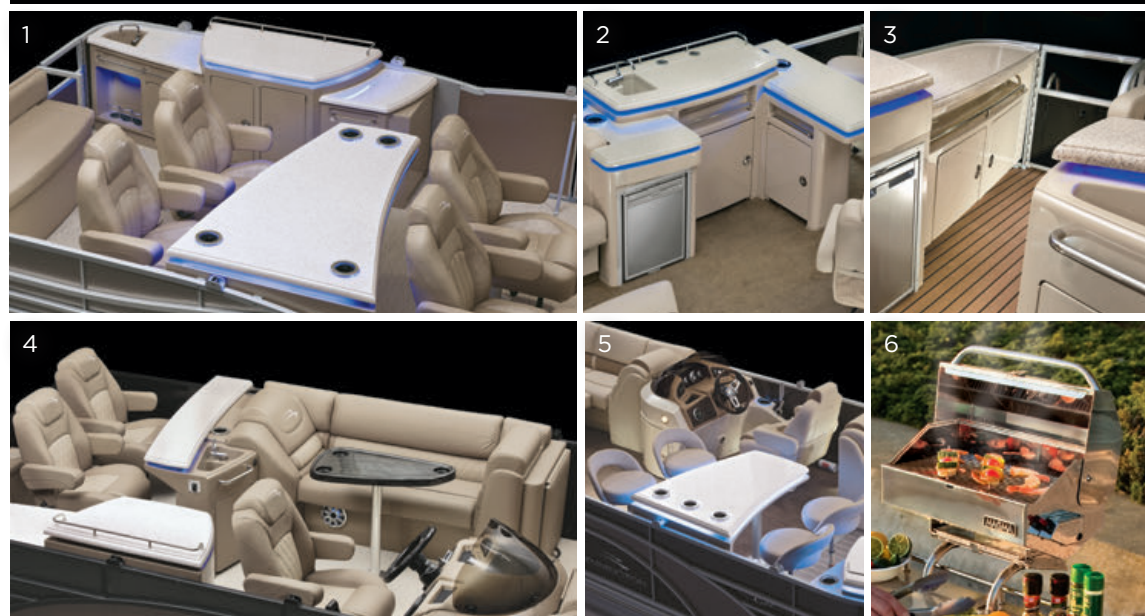
Entertainment Bar / Galleys	QX	Q	R	G	SXP	SX	S
Starboard Dinette Models	1	■	■	■	■	■	■
Midship Entertainment Bar	2	■	■	■	■	■	■
78" Galley & Stainless Steel Refrigerator	3	■	■	■	■	■	■
Stern Entertainment Bar	4	■	■	■	■	■	■
Port Dinette Models	5	■	■	■	■	■	■
Magma Deluxe Grill	6	■	■	■	■	■	■
Boarding Ladders	QX	Q	R	G	SXP	SX	S
Telescoping Stainless Steel Ladder (Outboard Models)	7	■	■	■	■	■	■
Telescoping Stainless Steel Ladder (I/O Models)	8	■	■	■	■	■	■
4-Step Curved Boarding Ladder (Only With Extended Aft Deck)	9	■	■	■	■	■	■
Deep-Step Boarding Ladder (N/A with Extended Aft deck)	10	■	■	■	■	■	■
G Platform Ladder (N/A with Extended Aft Deck)	11	■	■	■	■	■	■
Rail/Trim	QX	Q	R	G	SXP	SX	S
Stainless Steel Rub Rail	12	■	■	■	■	■	■
Heavy Duty Rub Rail	13	■	■	■	■	■	■
Stereos/Speakers	QX	Q	R	G	SXP	SX	S
Kicker KMCI Stereo with Bluetooth	14	■	■	■	■	■	■
Kicker KMCI0 Stereo with Bluetooth	15	■	■	■	■	■	■
Bennington Logo Ultimate Speakers	16	■	■	■	■	■	■
Kicker Speakers (Non-Illuminated)	17	■	■	■	■	■	■
Kicker Speakers with RGB (13 Colors) Lighting	18	■	■	■	■	■	■
Kicker Speakers (Blue Ice LED Illuminated)	19	■	■	■	■	■	■
Kicker Sub/Amp Upgrade	20	■	■	■	■	■	■
Kicker 8" Tower/Open Arch Speakers in White or Black with RGB (13 Colors)	21	■	■	■	■	■	■
Roswell Speaker with RGB (13 Colors) Lighting (In Boat)*	22	■	■	■	■	■	■
Roswell 8" Tower Speaker (Blue Ice Illuminated)	23	■	■	■	■	■	■
Roswell 8" & 6" Rotatable Open Arch Speaker with RGB (13 colors)	24	■	■	■	■	■	■
Fishing Options	QX	Q	R	G	SXP	SX	S
Pro Angler's Fish Station	25	■	■	■	■	■	■
Stern Fish Station & Livewell	26	■	■	■	■	■	■
Console with Integrated Bench with Livewell & Bait Bucket	27	■	■	■	■	■	■
Trolling Motor Gate	28	■	■	■	■	■	■
Corner Bow Box with Livewell	29	■	■	■	■	■	■
Corner Bow Storage Box	30	■	■	■	■	■	■
Rod Locker	31	■	■	■	■	■	■
Furniture Integrated Livewell (Configuration Varies Per Model)	32	■	■	■	■	■	■
Deluxe Bass Seat (Standard on Dinette Models)	33	■	■	■	■	■	■
Chairs	QX	Q	R	G	SXP	SX	S
Recliner	34	■	■	■	■	■	■
Recliner with Pressed Diamond	35	■	■	■	■	■	■
G-Series Sport Recliner	36	■	■	■	■	■	■
V2 Pure-Comfort Recliner	37	■	■	■	■	■	■
V2 Pure-Comfort Recliner with Pressed Diamond	38	■	■	■	■	■	■
V2 Pure-Comfort Recliner with Diamond Stitch	39	■	■	■	■	■	■
V2 Pure-Comfort Recliner with Bolster	40	■	■	■	■	■	■
V2 Pure-Comfort Extra-Wide Recliner with Bolster	41	■	■	■	■	■	■
Diamond Stitch Luxury Recliner	42	■	■	■	■	■	■

■ Included as standard equipment (May only apply to specific floor plans or configurations within series)

□ Available as optional equipment (May not be available on all floor plans or in conjunction with all options)

* Roswell Package Includes: Roswell In-Boat Speakers, Roswell Tower Speakers (Where Applicable), Roswell Sub/Amps, Dual Zone Volume Control Included on Some Models and Configurations, & Kicker KM10 Stereo (KMCI0 Required Upgrade on G Series).

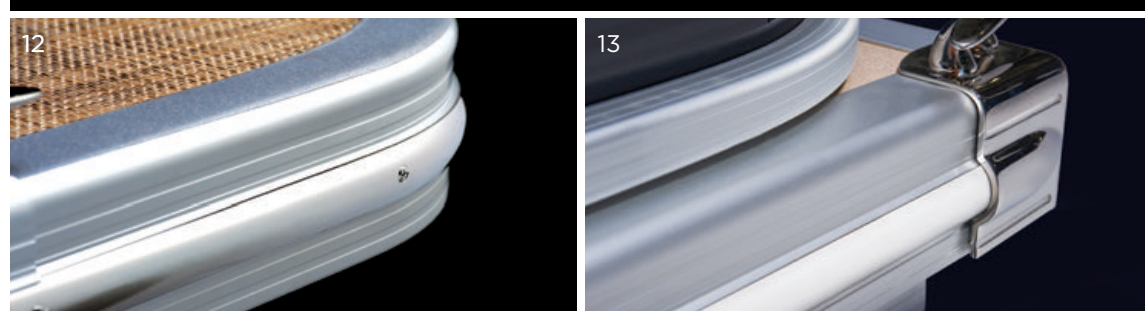
ENTERTAINMENT BARS/GALLEYS



BOARDING LADDERS



RAIL/TRIM



STEREOS/SPEAKERS



FISHING OPTIONS



CHAIRS

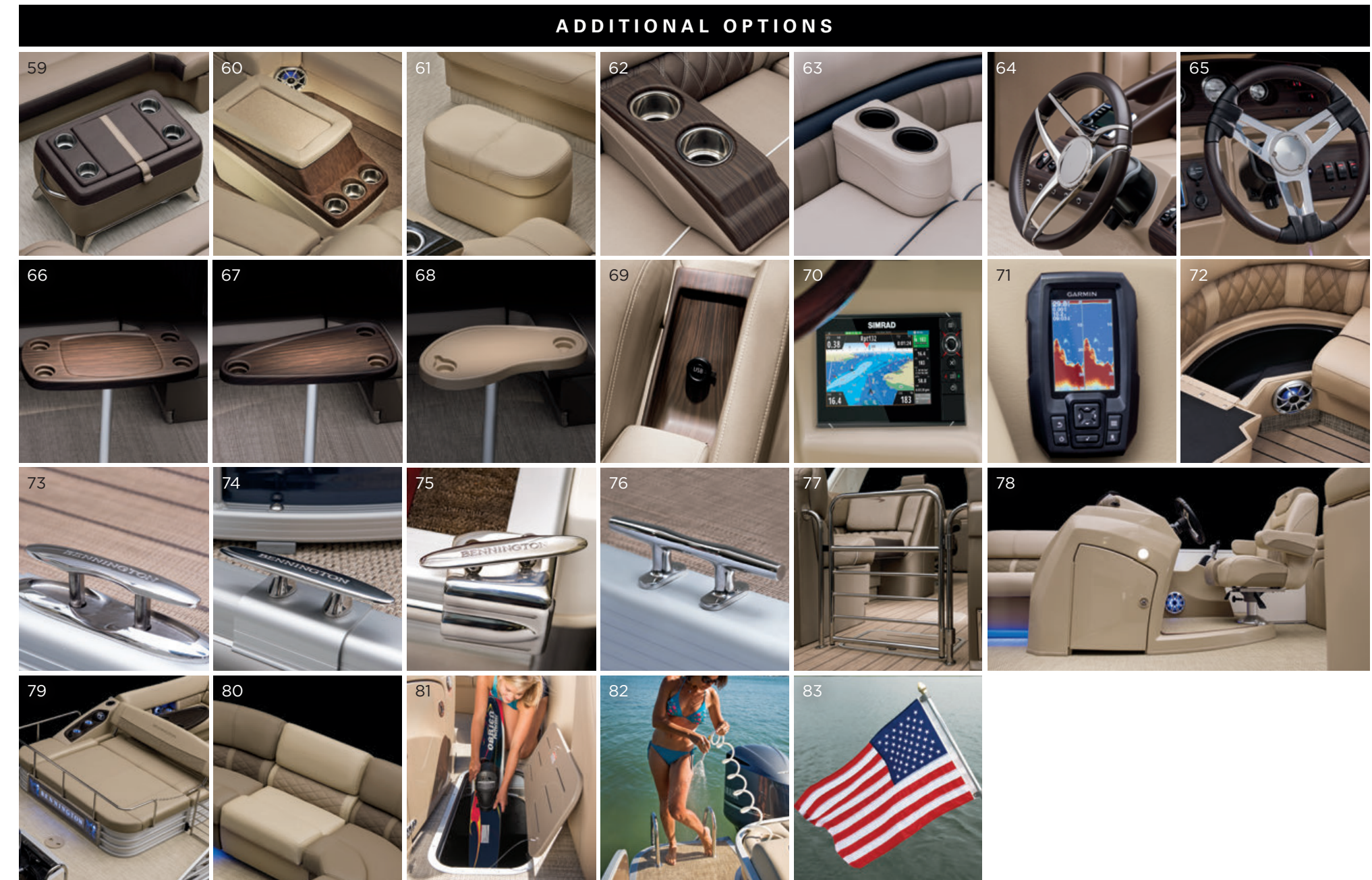
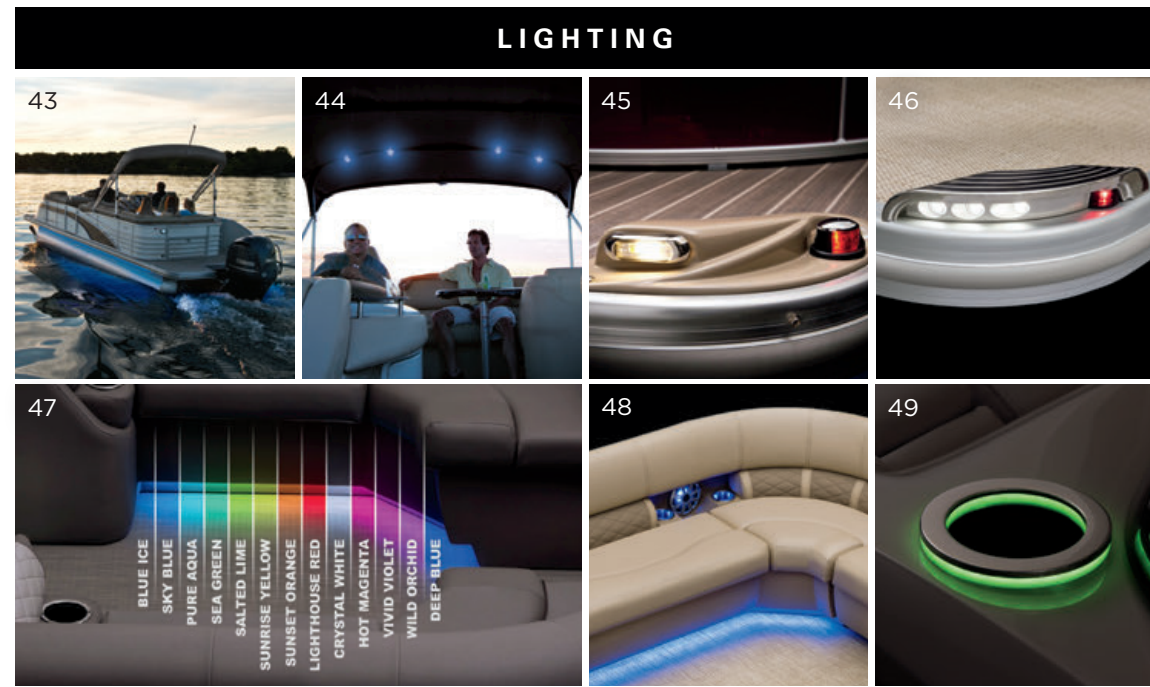


Lighting	QX	Q	R	G	SXP	SX	S
RGB (13 Colors) Side Illumination & Underwater White Lighting	43	<input type="checkbox"/>	<input type="checkbox"/>	<input type="checkbox"/>	<input type="checkbox"/>	<input type="checkbox"/>	<input type="checkbox"/>
Blue LED Bimini Lights	44	<input type="checkbox"/>	<input type="checkbox"/>	<input type="checkbox"/>	<input type="checkbox"/>	<input type="checkbox"/>	<input type="checkbox"/>
Docking Lights in ABS Housing	45	<input type="checkbox"/>	<input type="checkbox"/>	<input type="checkbox"/>	<input type="checkbox"/>	<input type="checkbox"/>	<input type="checkbox"/>
LED Docking Lights in Stainless Light Housing	46	<input type="checkbox"/>	<input type="checkbox"/>	<input type="checkbox"/>	<input type="checkbox"/>	<input type="checkbox"/>	<input type="checkbox"/>
RGB 13 Color Controller with Rotary Knob	47	<input type="checkbox"/>	<input type="checkbox"/>	<input type="checkbox"/>	<input type="checkbox"/>	<input type="checkbox"/>	<input type="checkbox"/>
RGB (13 Colors) Toe Kick Lighting	48	<input type="checkbox"/>	<input type="checkbox"/>	<input type="checkbox"/>	<input type="checkbox"/>	<input type="checkbox"/>	<input type="checkbox"/>
RGB (13 Colors) Lighted Cup Holders	49	<input type="checkbox"/>	<input type="checkbox"/>	<input type="checkbox"/>	<input type="checkbox"/>	<input type="checkbox"/>	<input type="checkbox"/>
Privacy Enclosures	QX	Q	R	G	SXP	SX	S
CW Privacy Enclosure	50	<input type="checkbox"/>	<input type="checkbox"/>	<input type="checkbox"/>	<input type="checkbox"/>	<input type="checkbox"/>	<input type="checkbox"/>
Swingback Privacy Enclosure (CW Shown)	51	<input type="checkbox"/>	<input type="checkbox"/>	<input type="checkbox"/>	<input type="checkbox"/>	<input type="checkbox"/>	<input type="checkbox"/>
Stern Storage Closet Privacy Enclosure	52	<input type="checkbox"/>	<input type="checkbox"/>	<input type="checkbox"/>	<input type="checkbox"/>	<input type="checkbox"/>	<input type="checkbox"/>
Chaise Privacy	52	<input type="checkbox"/>	<input type="checkbox"/>	<input type="checkbox"/>	<input type="checkbox"/>	<input type="checkbox"/>	<input type="checkbox"/>
Push-Button Electric Mega Privacy Enclosure	53	<input type="checkbox"/>	<input type="checkbox"/>	<input type="checkbox"/>	<input type="checkbox"/>	<input type="checkbox"/>	<input type="checkbox"/>
Ski Pylon/Ski Tow Bars	QX	Q	R	G	SXP	SX	S
Telescoping Ski Pylon	54	<input type="checkbox"/>	<input type="checkbox"/>	<input type="checkbox"/>	<input type="checkbox"/>	<input type="checkbox"/>	<input type="checkbox"/>
Removable Ski Pylon (Outboard Models)	55	<input type="checkbox"/>	<input type="checkbox"/>	<input type="checkbox"/>	<input type="checkbox"/>	<input type="checkbox"/>	<input type="checkbox"/>
Removable Ski Pylon (I/O Models)	56	<input type="checkbox"/>	<input type="checkbox"/>	<input type="checkbox"/>	<input type="checkbox"/>	<input type="checkbox"/>	<input type="checkbox"/>
Ski Tow Bar	57	<input type="checkbox"/>	<input type="checkbox"/>	<input type="checkbox"/>	<input type="checkbox"/>	<input type="checkbox"/>	<input type="checkbox"/>
Giant Turbo Swing	58	<input type="checkbox"/>	<input type="checkbox"/>	<input type="checkbox"/>	<input type="checkbox"/>	<input type="checkbox"/>	<input type="checkbox"/>
Additional Options	QX	Q	R	G	SXP	SX	S
Deluxe Ottoman	59	<input type="checkbox"/>	<input type="checkbox"/>	<input type="checkbox"/>	<input type="checkbox"/>	<input type="checkbox"/>	<input type="checkbox"/>
Coffee Table Ottoman Cooler	60	<input type="checkbox"/>	<input type="checkbox"/>	<input type="checkbox"/>	<input type="checkbox"/>	<input type="checkbox"/>	<input type="checkbox"/>
Ottoman Cooler	61	<input type="checkbox"/>	<input type="checkbox"/>	<input type="checkbox"/>	<input type="checkbox"/>	<input type="checkbox"/>	<input type="checkbox"/>
Q/R Series Portable Cup Holders	62	<input type="checkbox"/>	<input type="checkbox"/>	<input type="checkbox"/>	<input type="checkbox"/>	<input type="checkbox"/>	<input type="checkbox"/>
S Series Portable Cup Holders	63	<input type="checkbox"/>	<input type="checkbox"/>	<input type="checkbox"/>	<input type="checkbox"/>	<input type="checkbox"/>	<input type="checkbox"/>
Leather Wrapped Stainless Steel Corvina Steering Wheel	64	<input type="checkbox"/>	<input type="checkbox"/>	<input type="checkbox"/>	<input type="checkbox"/>	<input type="checkbox"/>	<input type="checkbox"/>
Custom Steering Wheel*	65	<input type="checkbox"/>	<input type="checkbox"/>	<input type="checkbox"/>	<input type="checkbox"/>	<input type="checkbox"/>	<input type="checkbox"/>
Dinette Table (Shown in ZebraWood Beige)*	66	<input type="checkbox"/>	<input type="checkbox"/>	<input type="checkbox"/>	<input type="checkbox"/>	<input type="checkbox"/>	<input type="checkbox"/>
Trapezoid Table (Shown in ZebraWood Beige)*	67	<input type="checkbox"/>	<input type="checkbox"/>	<input type="checkbox"/>	<input type="checkbox"/>	<input type="checkbox"/>	<input type="checkbox"/>
Kidney Table Color-Matched (N/A 8' Narrow-Beam Models)	68	<input type="checkbox"/>	<input type="checkbox"/>	<input type="checkbox"/>	<input type="checkbox"/>	<input type="checkbox"/>	<input type="checkbox"/>
USB Ports	69	<input type="checkbox"/>	<input type="checkbox"/>	<input type="checkbox"/>	<input type="checkbox"/>	<input type="checkbox"/>	<input type="checkbox"/>
Simrad G05 Touch Screen Fish/Depth Finder with GPS	70	<input type="checkbox"/>	<input type="checkbox"/>	<input type="checkbox"/>	<input type="checkbox"/>	<input type="checkbox"/>	<input type="checkbox"/>
Garmin Stryker 4 Fish/Depth Finder with GPS	71	<input type="checkbox"/>	<input type="checkbox"/>	<input type="checkbox"/>	<input type="checkbox"/>	<input type="checkbox"/>	<input type="checkbox"/>
Bow Corner Seat Cooler	72	<input type="checkbox"/>	<input type="checkbox"/>	<input type="checkbox"/>	<input type="checkbox"/>	<input type="checkbox"/>	<input type="checkbox"/>
Bennington Pop-Up Stainless Steel Cleat (When Available)	73	<input type="checkbox"/>	<input type="checkbox"/>	<input type="checkbox"/>	<input type="checkbox"/>	<input type="checkbox"/>	<input type="checkbox"/>
Bennington Stainless Steel Cleat	74	<input type="checkbox"/>	<input type="checkbox"/>	<input type="checkbox"/>	<input type="checkbox"/>	<input type="checkbox"/>	<input type="checkbox"/>
Bennington Stainless Steel Corner Cleat	75	<input type="checkbox"/>	<input type="checkbox"/>	<input type="checkbox"/>	<input type="checkbox"/>	<input type="checkbox"/>	<input type="checkbox"/>
Stainless Steel Cleat	76	<input type="checkbox"/>	<input type="checkbox"/>	<input type="checkbox"/>	<input type="checkbox"/>	<input type="checkbox"/>	<input type="checkbox"/>
Stainless Steel Stern Gate	77	<input type="checkbox"/>	<input type="checkbox"/>	<input type="checkbox"/>	<input type="checkbox"/>	<input type="checkbox"/>	<input type="checkbox"/>
Raised Helm (SXP Shown)	78	<input type="checkbox"/>	<input type="checkbox"/>	<input type="checkbox"/>	<input type="checkbox"/>	<input type="checkbox"/>	<input type="checkbox"/>
Stainless Steel Keeper Rail with Gate	79	<input type="checkbox"/>	<input type="checkbox"/>	<input type="checkbox"/>	<input type="checkbox"/>	<input type="checkbox"/>	<input type="checkbox"/>
Removable Bow Gate Seat (SXP Series Shown)	80	<input type="checkbox"/>	<input type="checkbox"/>	<input type="checkbox"/>	<input type="checkbox"/>	<input type="checkbox"/>	<input type="checkbox"/>
In-Floor Storage	81	<input type="checkbox"/>	<input type="checkbox"/>	<input type="checkbox"/>	<input type="checkbox"/>	<input type="checkbox"/>	<input type="checkbox"/>
Wash Down	82	<input type="checkbox"/>	<input type="checkbox"/>	<input type="checkbox"/>	<input type="checkbox"/>	<input type="checkbox"/>	<input type="checkbox"/>
American Flag	83	<input type="checkbox"/>	<input type="checkbox"/>	<input type="checkbox"/>	<input type="checkbox"/>	<input type="checkbox"/>	<input type="checkbox"/>

■ Included as standard equipment (May only apply to specific floor plans or configurations within series)

□ Available as optional equipment (May not be available on all floor plans or in conjunction with all options)

* Available in ZebraWood Beige, ZebraWood Slate & Espresso Teak configurations within series

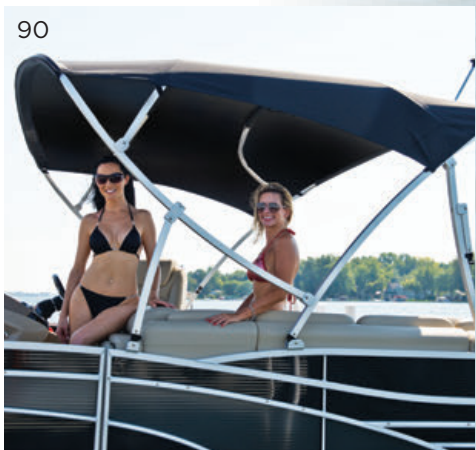
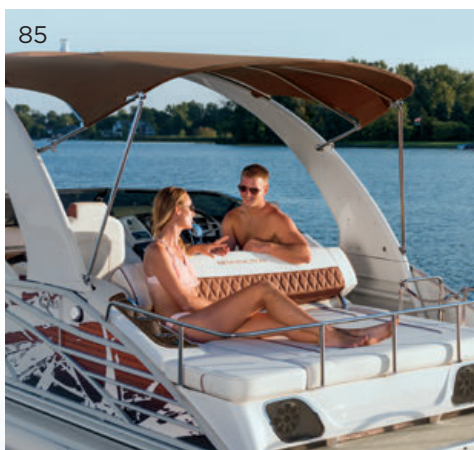


TOPS, ARCHES & TOWERS

From the fabric to the fittings, Bennington has engineered its tops for effortless functionality & ultimate longevity.

- 84 Standard Bimini
- 85 Cladded Sport Arch
- 86 Sport Tower
- 87 Open Sport Arch
- 88 Double Bimini
- 89 Power Curved Bimini
- 90 Curved Bimini

Availability varies by model and configuration. Sport Tower and Open Arches are not available on 10' wide-beam boats.



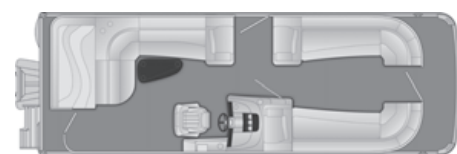
SALTWATER READY

Equip your Bennington for saltwater environments with features like sacrificial Navalloy™ anodes and sealed lifting strakes. Additional standard features—include our cover clip system, corrosion-proof bimini fittings, & anodized railings—ensure your Bennington will look as good as it performs for years to come*.

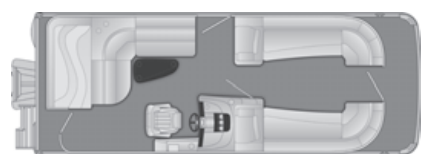
*Routine Maintenance Required



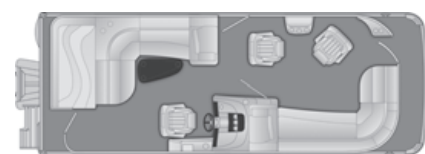
CRUISE



R - 25 RL



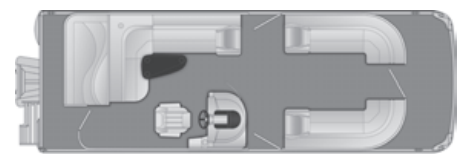
R - 23 RL



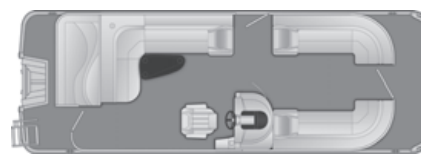
R - 23 RLCP



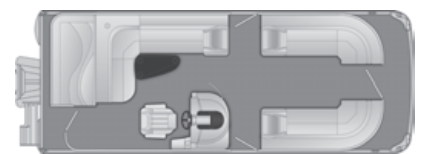
R - 21 RL



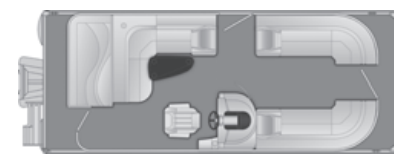
G - 25 GL



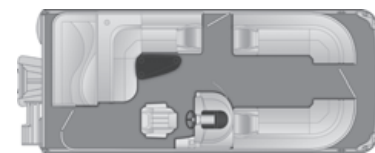
G - 23 GL



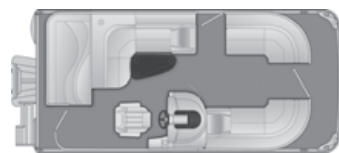
G - 22 GL



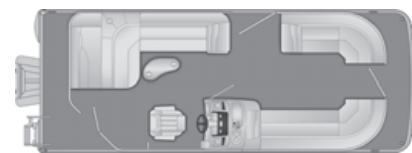
G - 22 GL3



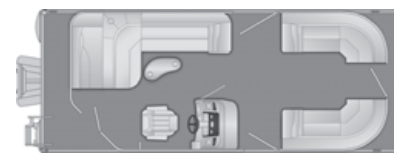
G - 20 GL



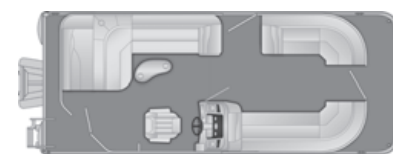
G - 18 GL



SX - 23 SLX3



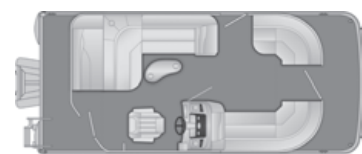
SX - 23 SLX



SX & SXP - 22 SLX



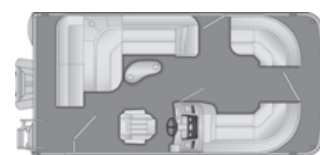
SX & SXP - 21 SLX



SX & SXP - 20 SLMX



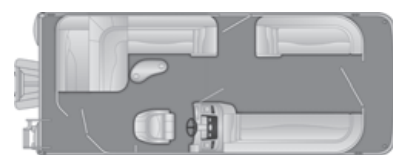
SX & SXP - 20 SLX



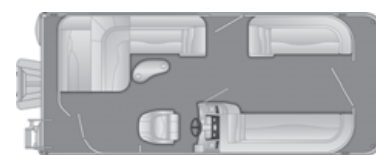
SX & SXP - 18 SLX



S - 23 SL



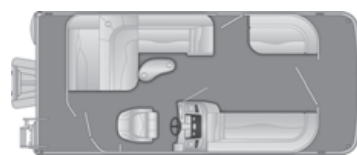
S - 22 SL



S - 21 SL



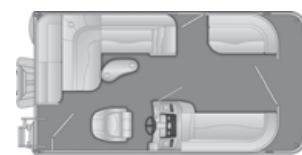
S - 20 SL



S - 20 SLM

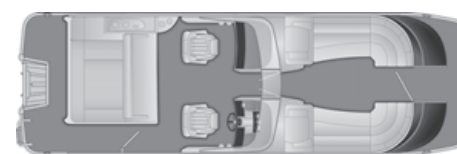


S - 18 SL



S - 16 SL

SWINGBACK



QX - 25 QXSBW Windscreen



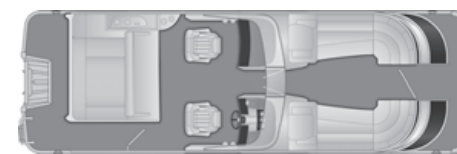
QX - 25 QXSBWA Windscreen Arch



Q - 25 QSB



Q - 25 QSBA Arch



Q - 25 QSBW Windscreen



Q - 25 QSBWA Windscreen Arch



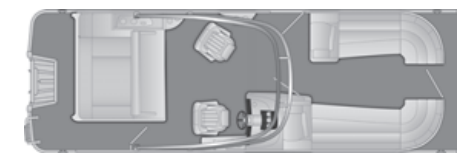
Q - 23 QSBW Windscreen



R - 25 RSB



R - 25 RSBW Windscreen



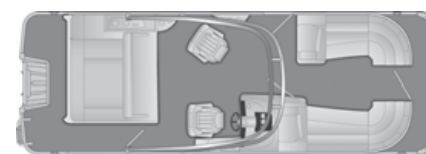
R - 25 RSBA Arch



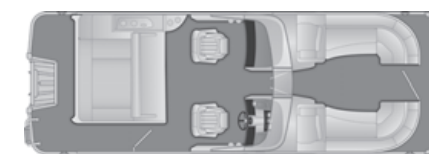
R - 25 RSBWA Windscreen Arch



R - 23 RSB



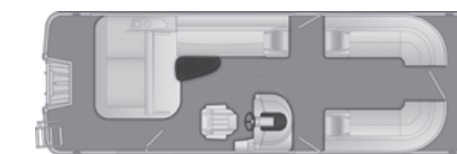
R - 23 RSBA Arch



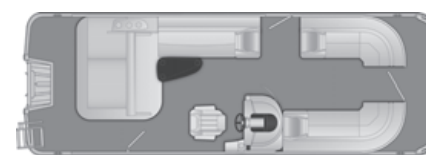
R - 23 RSBW Windscreen



R - 23 RSBWA Windscreen Arch



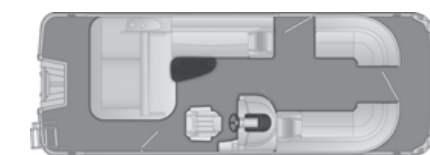
G - 25 GSB



G - 23 GSB



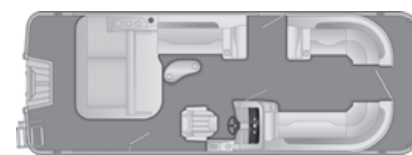
G - 23 GSBA Arch



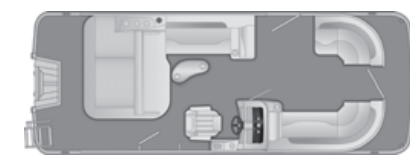
G - 22 GSB



SXP - 25 SSBXP



SXP - 23 SSBXP



SXP - 22 SSBXP

STERN RADIUS & FASTBACK



QX - 25 QXFB Fastback



QX - 25 QXFBWA Fastback
Windscreen Arch



Q - 25 QSR



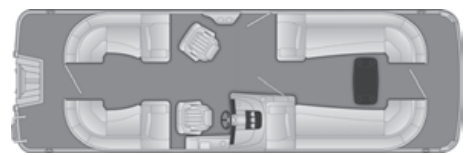
Q - 25 QSRA Arch



Q - 25 QSRFB Fastback



Q - 25 QSRFBA Fastback Arch



R - 25 RSR



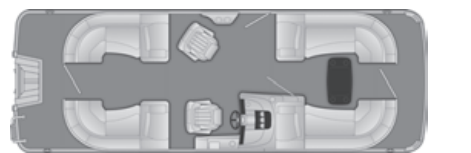
R - 25 RSRA Arch



R - 25 RSFB Fastback



R - 25 RSFBA Fastback Arch



R - 23 RSR



R - 23 RSRA Arch



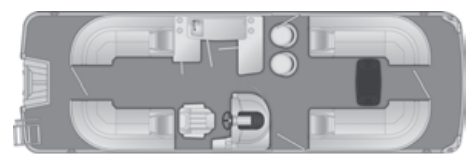
R - 23 RSFB Fastback



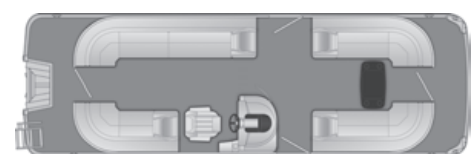
R - 23 RSFBA Fastback Arch



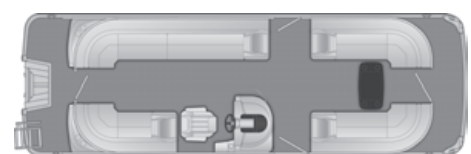
G - 25 GSR



G - 25 GSRB



G - 25 GSRC



G - 25 GSRCFB Fastback



G - 25 GSRFB Fastback



G - 23 GSRCFB Fastback



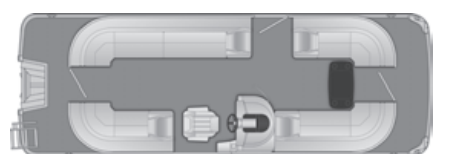
G - 23 GSRFB Fastback



G - 23 GSR



G - 23 GSRA Arch



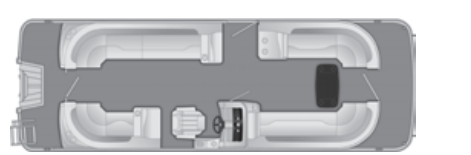
G - 23 GSRC



G - 23 GSRFBA Fastback Arch



G - 22 GSRFB Fastback



SXP - 25 SSRFCBXP



SX - 25 SSRXC



SX - 25 SSRX



SXP - 23 SSRFCBXP Fastback



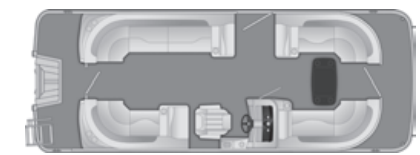
SXP - 23 SSRFBXP Fastback



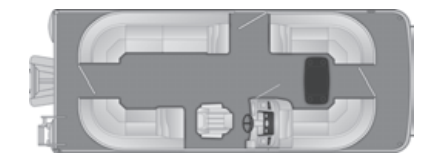
SX & SXP - 23 SSRXC



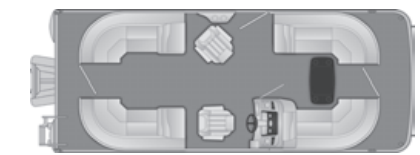
SX & SXP - 23 SSRX



SXP - 22 SSRFCBXP Fastback



SX & SXP - 22 SSRXC



SX & SXP - 22 SSRX



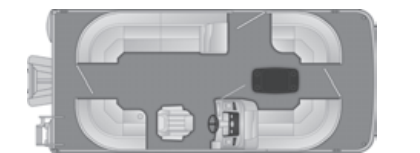
SXP - 22 SSRFBXP Fastback



SX & SXP - 21 SSRXC



SX & SXP - 21 SSRX



SX & SXP - 20 SSRXC



SX & SXP - 20 SSRX

CLUB



Q - 25 QCL



Q - 23 QCL

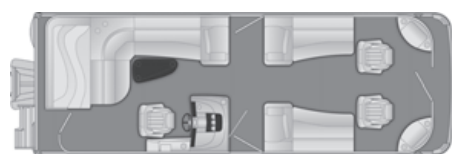


R - 25 RCL



R - 23 RCL

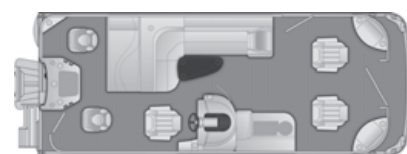
FISHING



R - 25 RFS



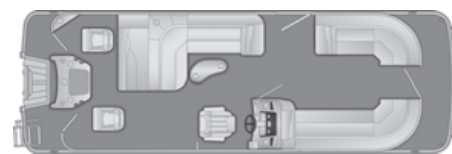
G - 22 GS



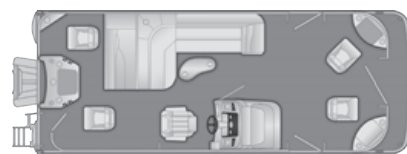
G - 22 GFS



G - 20 GS



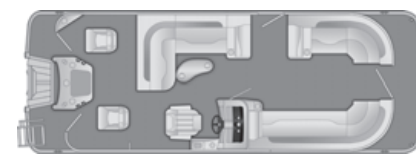
SX & SXP - 25 SSX APG



SX - 23 SFX



SX - 23 SFX APG



SX & SXP - 23 SSNPX APG



SX & SXP - 23 SSX APG



SX - 22 SFX



SX - 22 SFX APG



SX & SXP - 22 SSX



SX & SXP - 22 SSX APG



SX - 21 SFX



SX - 21 SFX APG



SX & SXP - 21 SSX



SX & SXP - 21 SSX APG



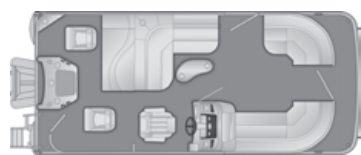
SX - 20 SFX



SX - 20 SFNPX No Privacy



SX & SXP - 20 SSNPX



SX & SXP - 20 SSX



SX - 18 SFX



SX - 16 SFX



S - 23 SF



S - 22 SF



S - 21 SF



S - 20 SF



S - 20 SFNP No Privacy



S - 20 SS



S - 18 SF

DINETTE & ENTERTAINMENT BAR



Q - 25 QBR



Q - 25 QCWB



Q - 25 QSD



R - 25 RBR



R - 25 RCWB



R - 25 RSD



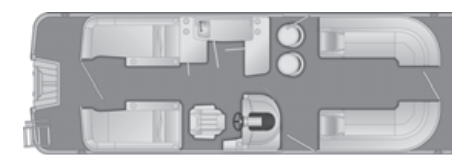
R - 25 RSFBB Fastback



R - 23 RBR



G - 25 GBR



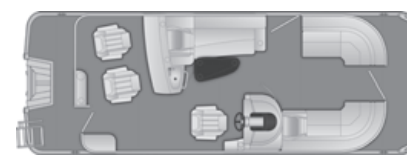
G - 25 GCWB



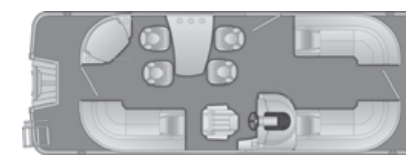
G - 25 GPD



G - 23 GPD



G - 22 GBR



G - 22 GPD



SX & SXP - 25 SPDX

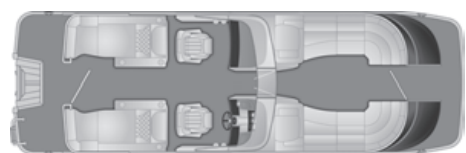


SX & SXP - 23 SBRX

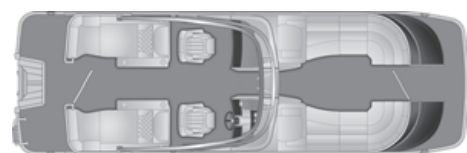


SX & SXP - 23 SPDX

STERN LOUNGE



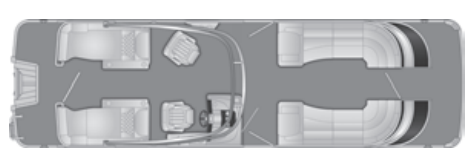
QX - 25 QXCWW Windscreen



QX - 25 QXCWWA Windscreen Arch



QX - 25 QXCWWT Windscreen Sport Tower



Q - 28 QCWA Arch



Q - 25 QCW



Q - 25 QCWA Arch



Q - 25 QCWL Closed Stern



Q - 25 QCWT Sport Tower



Q - 25 QCWWA Windscreen Arch



Q - 23 QCW



R - 25 RCW



R - 25 RCWCP



R - 23 RCW



R - 23 RCWA Arch



R - 23 RCWL Closed Stern



R - 22 RCW



G - 25 GCW



G - 25 GCWA Arch



G - 23 GCW



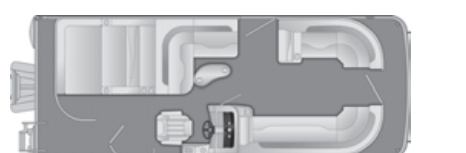
G - 23 GCWA Arch



G - 22 GCW



SX & SXP - 23 SCWXP



SX & SXP - 23 SSLXP



SX & SXP - 23 SCWX



SX & SXP - 23 SSLDX



SX & SXP - 22 SCWX

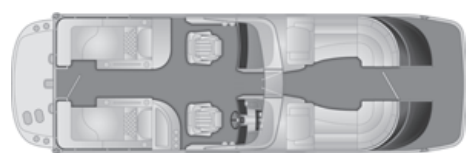


SX & SXP - 22 SSLDX



SX & SXP - 22 SSLX

INBOARD/OUTBOARD (STERNDRIVE)



QX - 25 QXCWW I/O Windscreen



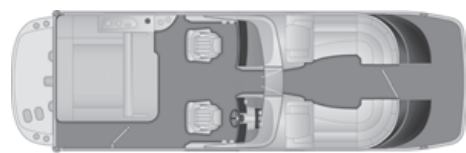
QX - 25 QXCWWA I/O Windscreen Arch



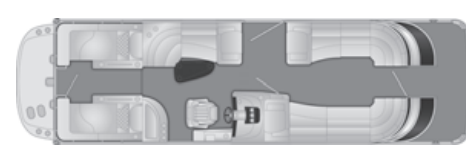
QX - 25 QXCWWT I/O Windscreen Sport Tower



QX - 25 QXSB X1 I/O Swingback



QX - 25 QXSBW I/O Windscreen



Q - 28 QCW I/O



Q - 28 QCWA I/O Arch



Q - 28 QCWT I/O Sport Tower



Q - 28 QSB X1 I/O Swingback



Q - 25 QCW I/O



Q - 25 QCWA I/O Arch



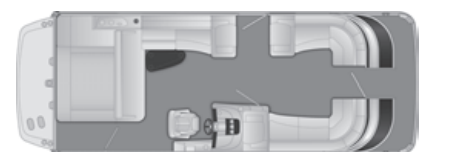
Q - 25 QCWT I/O Sport Tower



Q - 25 QCWWA I/O Windscreen Arch



Q - 25 QSB I/O



Q - 25 QSB X1 I/O Swingback



R - 28 RSB X1 I/O Swingback



R - 25 RCW I/O



R - 25 RCWT I/O Sport Tower

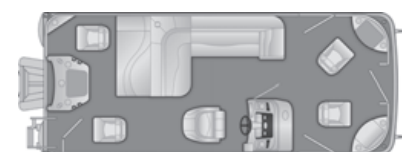


R - 25 RSB X1 I/O Swingback

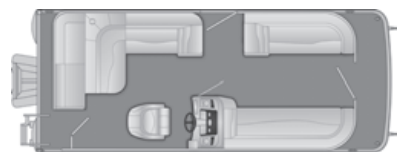


R - 25 RSB I/O

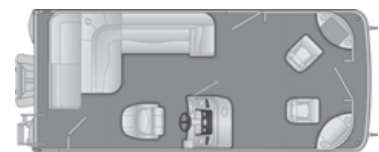
8 FT NARROW-BEAM



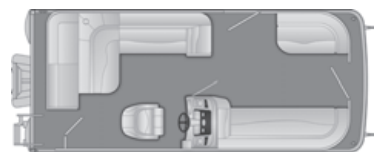
S - 218 SF



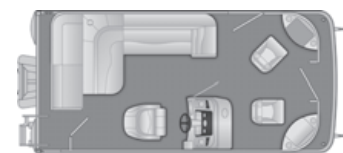
S - 218 SL



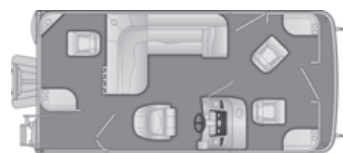
S - 208 SF



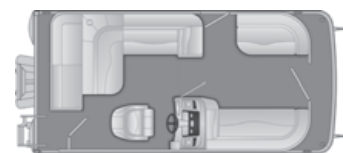
S - 208 SL



S - 188 SF



S - 188 SF3



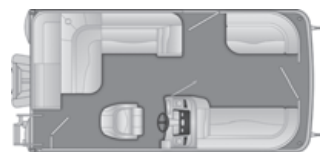
S - 188 SL



S - 168 SF



S - 168 SFE



S - 168 SL



S - 168 SLE

10 FT WIDE-BEAM



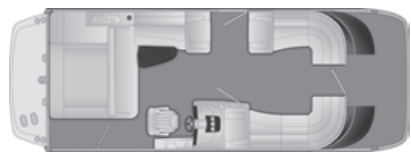
QX - 27 QXFBA X2 Fastback Cladded Arch



QX - 27 QXSBA X2 Swingback Cladded Arch



QX - 25 QXFB X1 Fastback Cladded Arch



QX - 25 QXSB X1 I/O Swingback Cladded Arch



QX - 25 QXSB X1 Swingback



Q - 30 QSRFBWA X2 Fastback Cladded Arch Windscreen



Q - 28 QSB X1 I/O Swingback



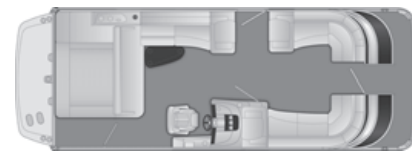
Q - 28 QSRFB X1 Fastback



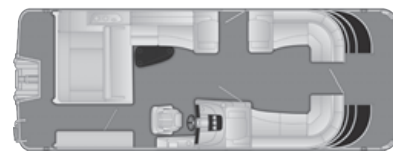
Q - 27 QSBA X2 Swingback Cladded Arch



Q - 27 QSRFBA X2 Fastback Cladded Arch



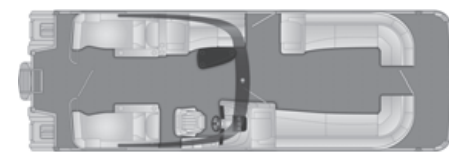
Q - 25 QSB X1 I/O Swingback Cladded Arch



Q - 25 QSB X1 Swingback



Q - 25 QSRFB X1 Fastback



R - 30 RCWA X2 Cladded Arch



R - 30 RSBA X2 Swingback Cladded Arch



R - 30 RSRA X2 Cladded Arch



R - 28 RCW X1



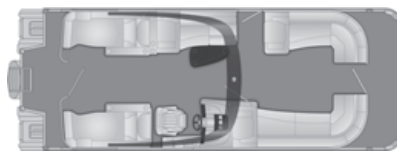
R - 28 RSB X1 I/O Swingback



R - 28 RSB X1 Swingback



R - 28 RSR X1



R - 27 RCWA X2 Cladded Arch



R - 27 RSBA X2 Swingback Cladded Arch



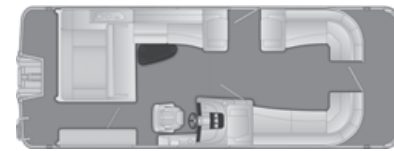
R - 27 RSRA X2 Cladded Arch



R - 25 RSB X1 I/O Swingback



R - 25 RCW X1



R - 25 RSB X1 Swingback



R - 25 RSBWA X1 Swingback Windscreen Cladded Arch



R - 25 RSR X1



R - 25 RSRW X1 Windscreen

BENNINGTON WARRANTY

Industry-leading 10-year bow-to-stern + lifetime structural warranty.

Lifetime Structural Warranty**

As an owner of a new Bennington, you receive a Limited Lifetime Warranty on the structure, pontoons, gates, channels, motor mount & rotomold seat frames. If anything goes wrong, we will fix it. Season after season, your Bennington will be ready.

Lifetime Deck Warranty**

As an owner of a new Bennington, you receive a Limited Lifetime Warranty on the 7-ply, pressure-treated, marine grade decking. Since they fasten the rails & deck directly through the under structure, Bennington decks flex less & will provide you with a lifetime of enjoyment.

10-Year (5+5) Bow-To-Stern Warranty**

As the original owner of a new Bennington, the first five years are on Bennington. Add an additional five years, for a total of ten years for free when you become a member of Club Bennington*. All materials & workmanship on your Bennington are covered – including flooring, upholstery & electronics. No hassles, no worries. The engine is covered by the engine manufacturer's warranty.

Transferable Warranty**

Bennington warranties are transferable through your local Bennington dealer adding to the resale value of your boat. The warranty period begins on the original owner's new boat purchase date. If the boat is sold during its warranty period, the standard warranty coverage will carry over to the new owner once the warranty is transferred through an authorized Bennington dealer.

No Hand-Off To Suppliers

Bennington doesn't hand off warranty responsibilities to its suppliers. When it comes to warranty claims, your Bennington dealer will take care of it directly with Bennington. After all, no one cares more about your satisfaction than Bennington does.

No Pro-Rating

Bennington boats carry the same valuable warranty whether it's the first day or the last day of the warranty period. Bennington does not use a declining scale of coverage in its warranty, also known as pro-rating.

Partnership With Our Dealers

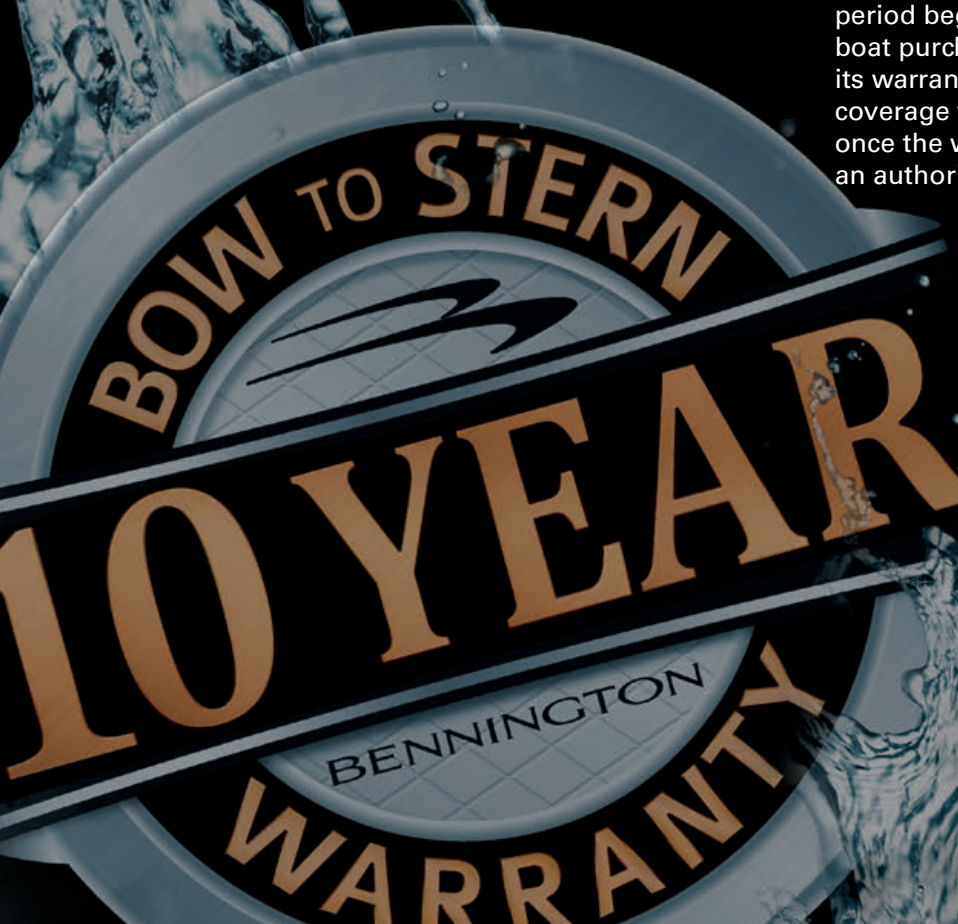
Bennington dealers receive 100% of the retail shop labor rate for warranty repairs. This ensures that your warranty work is a priority & completed quickly with your satisfaction in mind.

Excellence In Customer Satisfaction

Bennington has earned the Customer Service Index (CSI) award for "Excellence in Customer Satisfaction" an industry leading 19 times every year since its inception. Given by the National Marine Manufacturer Association, the CSI Award recognizes manufacturers who receive exceptional satisfaction scores for boat, engine, & dealer experience.

* Get the most out of being a Bennington owner by registering for the extended 10-year warranty coverage. Visit www.ClubBennington.com & register today!

** Please visit www.BenningtonMarine.com for specific warranty details.



BENNINGTON DESIGN CENTER

Visit our new Virtual Design Center at www.BenningtonMarine.com

Begin building your new Bennington. With over 200 models, 13 exterior and 6 interior colors both with endless accent combinations and tons of options for every type of boater, we encourage you to be inspired and create a Bennington that is uniquely yours!

Once you've built your virtual Bennington visit your local Bennington dealer and experience firsthand the level of personal attention you deserve!



The Bennington family, including our dealers, employees, and suppliers, have an incredibly bright future, and we thank each one of you for the work ethic, dedication, and loyalty that goes into our brand. We also value the importance of our heritage- a focus on being the best, not the biggest, that is still the core of Bennington today. Thank you for being a part of the Bennington family.

Established 1997 | BenningtonMarine.com | 2805 Decio Drive, Elkhart, Indiana 46514



Celebrating Life On The Water

V2.01.17.2018